

2008 FOUNDATION ANNUAL REPORT

A YEAR OF **TRANSFORMATION**



GEORGIA STATE UNIVERSITY FOUNDATION

P.O. BOX 3963

ATLANTA, GEORGIA 30302-3963

For additional information, contact Kimber Burgess at 404.413.1319.

Project Manager: Kimber Burgess

Editors: Jessica Blount, Meghan Eichelberger,
Kirsten Soriano, Julie Van Balen

Writers: Kendra Bentle, Kimber Burgess

Photographers: Meg Buscema, Stephen Jones, Carolyn Richardson

TABLE OF CONTENTS

Message from the University President	03
Message from the Foundation Chair	03
Georgia State University Foundation Board of Trustees	04
Transforming Athletics	07
Transforming the University	08
Transforming Music	10
Transforming Responsibilities	11
Transforming Opportunities	12
Transforming College Life	13
Ways to Give—Outright Gifts and Pledges	15
Ways to Give—Planned Gifts	16
Honor Roll of Donors—President’s Trust	17
The Heritage Society	20
Honor Roll of Donors—The President’s Society	22
List of Foundation Endowments	40
Fiscal Year 2008 Foundation Financial Information	44
University Highlights 2007-2008	46



MESSAGE FROM THE FOUNDATION CHAIR



This year's annual report focuses on transition. Fiscal year 2008 proved to be a year of great changes at the university. The opening of University Commons, major renovations to the library and Florence Kopleff Recital Hall, and the announcement of football are just a few examples that you will read about in this report. Of course, the retirement of President Carl Patton after 16 incredible years is bittersweet. His accomplishments are noteworthy and his legacy is this vibrant institution, which will continue to move forward.

Attending college is definitely a time of transition. I remember when I entered Georgia State's College of Law. After spending several years as a teacher, returning to a classroom setting where I was the student was a significant change for me. My law professors challenged me, forcing me to think with a legal mindset and equipping me with the skills I needed to effectively understand and interpret law to improve public education for future generations.

As an alumna and donor, part of my commitment to this growing university is to provide the resources for students to experience the same opportunities that transformed my life.

Sincerely,

A handwritten signature in cursive script that reads "Cathy Henson".

Catherine C. Henson '89
Chair
Georgia State University Foundation

MESSAGE FROM THE UNIVERSITY PRESIDENT



It is with great satisfaction that I write this message to you after having served as Georgia State University's president and as a trustee of the Georgia State University Foundation for more than 16 years. Private support was an underdeveloped concept at the university when I arrived. Throughout the years, the financial support of donors has helped shape Georgia State into a major, urban research university.

Your gifts have provided deserving students and faculty the opportunity to expand their knowledge and better themselves and our global community. You have allowed all the concepts envisioned in the first Main Street Master Plan to be implemented. As a place where students live, learn and work, the Georgia State campus has become a vibrant community well connected with the city. The university's transformation would not be occurring without your support.

It has been a great privilege to be a part of this impressive institution. As you look through the pages of this year's annual report, you will notice the significant impact your dollars have made to the university. I look forward to continuing to support Georgia State in all its future endeavors.

Sincerely,

A handwritten signature in cursive script that reads "Carl Patton".

Carl V. Patton
President
Georgia State University

GEORGIA STATE UNIVERSITY FOUNDATION BOARD OF TRUSTEES

JULY 1, 2007–JUNE 30, 2008

Catherine C. Henson '89
Georgia State University Foundation Chair
Georgia School Council Institute

Valencia Adams '88
BellSouth Corporation (retired)

Helen M. Aderhold '76, '01
Community Leader

Steven Asplundh '86
Asplundh Tree Expert Company

William C. Balzer '98
UPS (retired)

Kenneth L. Bernhardt
Georgia State University Faculty

Kathy T. Berry '72, '86
Georgia Press Association (formerly)

W. Frank Blount '69
JI Ventures, Inc. & TTS Management
Corporation

Frances L. Breeden '80
SunTrust

Anthony P. Burger '71
Pritchard & Jerden, Inc.

Maxwell M. Burns '88
Alliance Capital Management, LLP

David H. Flint
Schreeder, Wheeler & Flint, LLP

Danny W. Huff '73
Georgia-Pacific Corporation (retired)

Richard J. Jacobson '80
Cox Enterprises, Inc.

Jack R. Kelly Jr. '64
Noro-Moseley Partners (retired)

Richard H. Lenny '74
The Hershey Company (retired)

John D. Marshall, Jr.
Georgia State University

Paul Mendel '82
RB Management Services, Inc.

L. Anthony Montag
Montag & Associates

Diane L. Parks '76
Amgen, Inc.

William C. Pate '81, '85
Career Sports & Entertainment

Carl V. Patton
Georgia State University President

E. Vachel Pennebaker '70
Sears, Roebuck & Co. (retired)

Nancy E. Peterman
Georgia State University Foundation President

Mark A. Phillips '74
Bank of America Corporation

Jerry J. Rackliffe '83, '88, '05
Georgia State University
Vice President, Finance & Administration

William D. Reeves '59
Reeves Development Company

H. Jerome Russell Jr. '85
H.J. Russell & Company

W. Clayton Sparrow '79
Seyfarth Shaw LLP

James A. Stark '68
Crum & Forster (retired)

Joseph K. Taylor '70, '78
Northside Hospital (retired)

J. Grover Thomas Jr. '85
Trustmark Insurance Company

Christopher B. Torie
Wells Fargo

Dexter B. Warrior '85, '90
Morgan Stanley





TRANSFORMING ATHLETICS

Atlanta is primed, pumped and ready to rally around a new college sports team. Students appreciate a “well-rounded” academic experience—books, friends and stands full of fans. Alumni adore circling back to their alma mater in droves—often in face paint. So, in 2008, Georgia State University announced that it was ready to offer a solution to all those left wanting—after 95 years, a Panther football team. It never would have happened without private donations.

I have seen the value of private donations to intercollegiate athletics at every stop in my career. It is the sine qua non of startup programs.

Sure, contracting Dan Reeves as football consultant, securing an unprecedented student vote to raise athletic fees, and hiring veteran Coach Bill Curry to lead the team into its first season made endless Saturdays on the turf a feasible idea. But private contributions made it a reality.

“I have seen the value of private donations to intercollegiate athletics at every stop in my career. It is the sine qua non of startup programs,” says Coach Curry, “their reason for being; *without which, there would be nothing.*”

Sine qua non. A playbook without an author. A fight song without a musician to play it. This is not to say that there would be no Georgia State University without football. Just that there would be no football for Georgia State University without you—the donor, the student, the alumnus, the lover of the great American communion of sport and academics.

“We simply could not function without our alumni and student generosity,” Coach Curry adds. “We are most appreciative of our supporters.”



TRANSFORMING THE UNIVERSITY

Ask the Georgia State Board of Regents what it means to replace an outgoing president like Carl V. Patton, and they'll tell you what every student, faculty and staff member already knows: that a force this meaningful to the fabric of an institution just isn't easily replaced.

It's been 16 years since Dr. Patton left his post as the University of Toledo's vice president of academic affairs to travel east to a commuter college in the heart of Atlanta—and 16 years since that university began to transform, becoming one of the most respected research universities in the southeast. Look at the work that's been done, and it's obvious that it's all a matter of planning.

Perhaps more urban pioneer than academic, Dr. Patton has brought the benefit of his degrees in urban development, community planning and public policy to the revitalization of the Georgia State campus. From the launching of the Main Street Master Plan and its ongoing billion dollar expansion, to the school's first major capital campaign and the repositioning of Georgia State sports to a more visible conference, Dr. Patton has devoted the best of his unique expertise to his leadership of Georgia State. But it is the personal commitment of both he and his wife Gretchen that is perhaps the most remarkable gift of all.

In addition to being two of its most active advocates, Carl and Gretchen Patton are also among the university's most generous private supporters—having given \$275,000 of their own money to the school.

Dedicated to a diversity of causes, the Pattons find personally relevant, these programs have one main goal in common: to continue the ongoing in-growth of the school into the fabric of the largest city in the south.

THE CHILDREN'S COLLECTION—GEORGIA STATE LIBRARY

As an unmistakable symbol of the president's dedication to enrichment of the Georgia State educational experience, during 2003-2004, the Pattons donated not only nearly \$50,000 and 13,000 titles to the Georgia State Library, but a large chunk of their personal collection of children's books amassed over years as parents and grandparents. The Pattons' only direction according to Charlene Hurt, dean of libraries, was this passionate appeal: "Read to your children!"

THE BUSINESS AND LAW PROFESSIONAL CENTER

Envisioned as a unique melding of law and business designed for opportunities across disciplines and between the university and the Atlanta community, the Business and Law Professional Center physically combines portions of the

university’s College of Law and J. Mack Robinson College of Business. During Dr. Patton’s tenure, the Center has completed planning and is now ready to begin fund raising. And it couldn’t have been done without private contributions, says Charles Edwards, assistant dean for corporate relations at the Robinson College of Business: “Public funds provide for day to day operations. Private giving is necessary to allow the university the freedom to develop and execute initiatives that truly transform lives.”

THE PRESIDENTIAL SCHOLARSHIP

Since 1990, 135 Presidential Scholarships have been awarded to high-achieving, low-income students. Left behind by the HOPE Scholarship, these recipients cannot otherwise afford the costs of school and life in a pricey urban environment. To help, this scholarship allows students to truly live in the moment of their educations and in the city that houses them, offering a comprehensive package that combines tuition with money for housing, expenses and an opportunity to participate in a summer research program. “The goal is to facilitate the academic and professional development of outstanding students so that they will be leaders on campus and in the larger Atlanta community,” adds Greg Chisholm, Georgia State scholars program coordinator.

For students, faculty and staff to know the president and his wife are willing to give their own money to further support the outreach initiatives in which they are engaged speaks volumes and validate the winner’s continued outreach

THE PRESIDENT’S AWARDS OF EXCELLENCE

“From day one, Dr. Patton has been committed to making the university and the city better places to learn, live and work,” says Lovell Lemons, director of the Georgia State Office of Civic Engagement. Awarded to one student, student organization, faculty or staff member, university outreach program and one community partner each year, this award embodies all that the Patton legacy promises to Georgia State—rewarding connective service across campus and the community at large. As much of the Pattons’ work, it is a self-fulfilling prophecy: “For students, faculty and staff to know the president and his wife are willing to give their own money to further support the outreach initiatives in which they are engaged speaks volumes and validates the winner’s continued outreach,” says Lemons.





TRANSFORMING MUSIC

A dedicated performer from an early age, Florence Kopleff auditioned as a contralto for well-known conductor Robert Shaw during her senior year of college, and as a result became a soloist with the Grammy-winning Robert Shaw Chorale. She went on to build a national reputation as a soloist while performing with the American Opera Society, the Atlanta Symphony Orchestra and other major orchestras.

Kopleff came to Georgia State University in 1968 as the School of Music's first artist-in-residence. As an instructor, Ms. Kopleff was caring, tough and honest. Students loved her classes and knew that if they worked as hard as she expected them to they would emerge as stronger performers and artists.

Music is a natural inheritance of all peoples. Often it can be the key, along with all the arts, to unlocking a person.

Sue Williams MM '83, a former student of Kopleff, recalls, "Music is a natural inheritance of all peoples. Often it can be the key, along with all the arts, to unlocking a person, to revealing all the meaning, emotion and beauty that can be integrated into a life. Florence insisted that her students not only use that key but use it to the very best of their ability."

Today, though retired, Florence Kopleff continues to make a difference in the lives of talented students in the School of Music. She established a scholarship in 1984 and has left a bequest to support vocal performance at Georgia State through her estate. Kopleff also made significant contributions to the renovation of the school's 36-year-old recital hall, now named in her honor. A new stage floor, surround-sound system, orchestra pit and aisle expansion are just a few changes that make up the \$3 million renovation of the Florence Kopleff Recital Hall. The transformation enhances the hall's acoustics, which have been the strongest feature of the venue since it first opened. "The Kopleff Recital Hall's intimate setting and high-quality acoustics makes it one of the best venues in Atlanta for smaller ensembles," boasts Associate Dean for the Fine Arts Ralph Gilbert.

To honor the tremendous impact of Florence Kopleff and that of other stellar music faculty members, additional alumni and university friends made significant gifts to the School of Music for the recital hall. Sue Williams and her husband Neil supported the renovations. Tom and Ann Cousins also recognized the importance of the hall's transformation. The Charles Thomas Wurm Lobby of the recital hall is named for Tom Cousins' grandfather, an instrumental musician. Atlanta music legends Bill Lowery and his wife Billie endowed The Bill and Billie Lowery Family Green Room, providing superb rehearsal and concert preparation space in the hall.

The dedication that propelled Kopleff to excellence as a vocalist and teacher and prominence as a member of the Robert Shaw Chorale continues to resonate in her relationship as a donor with Georgia State's School of Music. It inspires young musicians to attain great things in a hall that is worthy of their talents.

TRANSFORMING RESPONSIBILITIES



"If you want to know where a person's heart is, look at their checkbook," says Tom Lewis, Georgia State's Senior Vice President of External Affairs. Interestingly, peek inside Tom Lewis' checkbook, and it's obvious where his heart lies—with the University he's loved, supported and served for nearly two decades.

Eighteen years ago, Lewis left a chief of staff position with outgoing Governor Joe Frank Harris to lend his time and talents to Georgia State—years he now quantifies as "the best of a great career." On November 30, 2008, Tom Lewis will retire but his presence will forever be felt on the Georgia State campus.

If you're truly committed to what you believe in, you also must be just as committed to supporting it.

Over his tenure, Lewis has personally contributed to a generous handful of schools, projects and programs, the selection of which were hardly accidental. In keeping with the mission of his post in External Affairs (an office whose goal is to promote the ongoing image and recognition of the university), Lewis' donations often benefitted programs with the potential for self-fulfilling, gyroscopic support. Projects like the Rialto Center, bringing school and city together over performance; the J. Mack Robinson College of Business, fostering new generations of leaders and donors; and Athletics, toward a "real university experience" designed to bring alumni and their dollars back home after game.

"I'm not even an alumnus, but I believe in Georgia State," Lewis says when asked about why he, or anyone, should give. "And if you're truly committed to what you believe in, you also must be just as committed to supporting it."



TRANSFORMING OPPORTUNITIES

Established in 1999 by Ambassador Andrew Young and named in honor of his wife, the Carolyn McClain Young Leadership Fund supports a very special group of Georgia State University students—current and future international leaders in the areas of foreign policy, finance, private business and government. Up to four students from emerging economies in Africa and the Caribbean are awarded scholarships from this fund each year. This generous gift can often change much about a young recipient's future—from school to career to life itself.



GRACE CHIKOTO

Grace Chikoto is from Harare, Zimbabwe, a country that is in her words, “going through a rather rough patch economically and politically.” Fortunately, things weren’t always this way, and she remembers a time when citizens left regularly to see the world, gain educations abroad, and then return to better their homeland. And this, for Grace, is exactly what the Carolyn Young Scholarship will allow her to accomplish.

Chikoto was awarded the scholarship in 2002 when she joined Georgia State University’s Master of Public Administration program, and again when she enrolled in the joint Ph.D. program in 2004. “This was truly a God-sent and rare opportunity that is not available to many,” she says of the award and the opportunities it offered. “The dropout rate is very high among those who venture here without any solid financial support. The peace of mind the scholarship offers allows me to fully focus on and commit to my education, thus removing any worry about whether I will be able to complete what I have started owing to insufficient funding.”

Today Grace is a Ph.D. candidate enrolled in Georgia State’s public policy program, where she looks forward to graduation, a possible assistant professorship, and her chance to “make a difference.” For her part, she feels blessed. “I thank God and Mrs. Carolyn Young for this honor. I feel extremely fortunate.”



SOLOMON TESFU

Solomon Tesfu is, at heart, an educator. Currently working full-time to complete dissertation requirements for a Ph.D. in economics, he looks upon his Carolyn Young Scholarship as a sure road toward enriching the skills of the less fortunate in his home city of Addis Ababa. “I’m sure that Carolyn McClain Young, a great educator herself, would love to see me teaching future generations in a developing country where higher education is still a luxury to most people,” he says of his post-graduation plans.

Tesfu’s scholarship awards in 2005, 2006 and 2007 have allowed him the focus needed to work diligently toward that future—as well as consider the lessons of his past on the other side of the world. A resident of Ethiopia, “one of the oldest independent countries in the world, but a place lately known for extreme poverty and recurrent famine,” Solomon cites his upbringing as motivation for pursuing a career in economics—and education. “As someone brought up in the midst of extreme poverty and as someone who would wish to make some contribution towards fighting it, economics came as a natural choice to me. The economics department at Georgia State is one that is growing quite fast while others are declining.”

The main reason why I ultimately decided to join Georgia State University was the generosity of the Carolyn McClain Young Scholarship. It is not an exaggeration if I say the scholarship was “manna from heaven” for me.



TRANSFORMING COLLEGE LIFE

Q&A LIVING IN THE UNIVERSITY COMMONS

Dia Burton—Junior, Early Childhood Education major from Morrow, Georgia
Kelly Minor—Junior, Psychology major from Denver, Colorado

Georgia State University's newest on-campus housing complex, University Commons, opened for students in August 2007. A short walk to class, the Student Recreation Center and the Student Center, University Commons houses over 2,000 students in two- and four-bedroom apartments. The complex is comprised of four buildings ranging from eight to 15 stories surrounding a large landscaped courtyard. The addition to Georgia State is the largest, privately-funded student housing complex in the country.

Describe the impact living in the Commons has made on your college experience.

Dia: It was a hard choice to move to the Commons because my family offered to let me live with them in Atlanta for free. Dorm life exceeded my expectations and is a decision I'm glad I made.

Kelly: It is a great way to meet people and very convenient being close to classes. I also love the food that is close by.

What is the most popular hang out spot in the University Commons?

Dia: The community rooms.

Kelly: The lobby or the courtyard on a sunny day.

How has living in the Commons been beneficial to you academically this semester?

Dia: The community rooms in the Commons are a great place to study. When we have group projects, these rooms are great to meet in as well.

Kelly: When I had a question about an assignment, I could easily find one of my classmates to help. I like being able to get to the library and professors' offices easily.

What type of friends have you made in the Commons that you may not have met otherwise?

Kelly: My roommates, neighbors and friends of friends were all people I would not have come in contact with unless I lived on campus.

Dia: Not being very social, I was surprised to meet so many people in the Commons. The girls I room with are like my best friends, sisters even.



WAYS TO GIVE

OUTRIGHT GIFTS AND PLEDGES

All gifts to the Georgia State University Foundation are meaningful investments that make a difference in the lives of students, faculty, staff, and the Atlanta community as well as individuals around the globe. Please call Nancy Peterman, vice president for development, at 404.413.3401 for more information about ways to give.

Outright gifts to the foundation may be made as single contributions or as pledges payable over a period of up to five years. Several forms of property may be accepted as gifts. This information is shared for educational purposes. Foundation and university staff do not give tax advice. Donors should consult professional advisers for legal, tax and financial advice.

Cash is the simplest way to make a gift. Checks should be made payable to the "GSU Foundation". Money orders, wire transfers and bank drafts are also acceptable. Credit card gifts, including Visa, MasterCard, Discover and American Express, may be made online at www.gsufoundation.org.

Marketable securities may offer double tax savings. For securities that have gained value and have been owned at least a year and a day, the gift is tax deductible at the market value of the securities and also avoids capital gains taxes. For stock transfer instructions, please call Marion Campbell at 404.413.3446.

Mutual fund shares, if long term appreciated, can enjoy the double advantage of a charitable deduction and capital gains tax avoidance. Transfer procedures vary depending on whether the shares are held in "street name" at a brokerage house or in the books of the mutual fund company. Please call David Brown at 404.413.3413 for assistance with gifts of mutual fund shares.

Closely held business interest gifts include corporations, LLC's, partnerships and other forms of business organization, each of which has unique tax considerations. Tax deductions are based on appraised market values.

Real estate, including residential, business or agricultural property, may be accepted as a gift. Both fractional and total ownership may be considered. The tax deduction is based on the appraised value.

Personal property gifts may be accepted. Deductions are determined, in part, by the relationship of the property to the mission of the university.

Life Insurance may be accepted as a cash value gift. A popular gift is an in-force, paid-up policy that a donor no longer needs and names the foundation as owner and beneficiary. For a gift of a policy that is not fully paid, later premium payments may also be deductible for tax purposes. The tax deduction is based on the replacement value, which varies according to policy details.

WAYS TO GIVE

PLANNED GIFTS

The Georgia State University Foundation encourages planned gifts, which create legacies for donors. Bequests and similar gifts usually take effect at the donor's death. Gifts that pay income for life generate immediate tax deductions as well as lifetime income. For more information about gift planning, please contact Christine Butler Eckoff at 404.413.3425 or ceckoff@gsu.edu, or visit www.gsu.edu/giving/plannedgiving.

Bequests

The most common form of deferred gift to Georgia State University is a bequest contained in a person's will or revocable (living) trust. Bequests can be written for a specific amount, a percentage of the estate or the remainder of the estate. Cash, securities or property may be willed to the Foundation. Please contact the Office of Gift Planning for sample bequest language.

Gift of Retirement Plans

Naming Georgia State University as a primary or contingent beneficiary of a private pension fund (e.g. IRA, SEP, 401(k)) can result in a "tax-wise" testamentary gift because these assets do not receive favorable tax treatment at their owner's death. The gift of IRAs or other retirement accounts can generate double tax savings when the Foundation is made the beneficiary. In addition to avoiding any estate taxation, Georgia State University will not be subject to income tax on withdrawals as would be the case with other non-charitable beneficiaries.

Life Income Gifts

A life income gift, such as a charitable gift annuity or a charitable remainder trust, can provide you and/or your loved ones with an income for the duration of your lives or for a specific number of years. You receive a current income tax deduction as well.

Charitable Gift Annuities are agreements between donors and the Georgia State University Foundation to exchange gifts for a fixed income for life. Payout rates are determined by the ages of the individuals receiving the income. Donors receive an immediate income tax deduction, and a portion of the annuity income is tax-free. Payments can begin immediately or be deferred to a future year.

Charitable Remainder Trusts transfer property to a trustee in exchange for the trustee's agreement to pay the donor an income. Payouts can be fixed or variable. The trust ends at the death of the last of the beneficiaries or at the expiration of a term of years, and the remainder is distributed to the Georgia State University Foundation. An immediate income tax charitable deduction is allowed for the remainder value.

Charitable Lead Trusts

Charitable Lead Trusts enable donors to transfer money or property to a trustee who makes payments to the Georgia State University Foundation for a specified number of years, after which the principal is returned to the donors or other individuals designated by the donors. The income to the charitable beneficiary can be varied or fixed. The lead trust can provide income, gift, estate and generation-skipping tax avoidance.

Gifts of a Retained Life Estate

You can generate a current income tax deduction by giving a home or farm to Georgia State University, while retaining the right to use the property during your lifetime. The property will also be removed from your taxable estate.



PRESIDENT'S TRUST

FISCAL YEAR 2008

The Georgia State University Foundation offers its sincerest gratitude to this special group of individuals and organizations in recognition of their cumulative gifts totaling \$100,000 or more. This tremendous generosity exhibits their dedication to the university.

PRESIDENT'S TRUST—GOLD

Lifetime gifts totaling \$1 million or more

Anonymous
Helen and John Aderhold
Robert E. Heck
Kenneth and Donna Lewis
Parker H. and Janet Petit
Deen Day Sanders
W.J. Usery Jr.
Andrew and Carolyn Young

Annenberg Foundation
Atlanta Law School
AT&T
Bank of America Corporation
Berner Charitable and Scholarship Foundation
Bill Usery Labor Management Relations Foundation
Board of Regents/University System of Georgia Foundation Inc.
The Coca-Cola Foundation
The Community Foundation of Greater Atlanta
Cousins Properties/Cousins Foundation
City of Alpharetta
E.I. DuPont De Nemours & Company
ExxonMobil Foundation
Fuller E. Callaway Trust
Georgia Power Foundation/Georgia Power Company
Georgia Research Alliance

Georgia State University Research Foundation Inc.
The Goizueta Foundation
J. Mack Robinson Foundation
John and Mary Franklin Foundation Inc.
Elena Diaz-Versòn Amos*/John B. and Elena B. Amos Foundation
Johnny Mercer Foundation
Joseph B. Whitehead Foundation
Lettie Pate Whitehead Foundation
Pittulloch Foundation
Robert W. Woodruff Foundation
SunTrust Directed Funds:
Walter H. and Marjory M. Rich Memorial Fund
Florence C. and Harry L. English Memorial Fund
Harriet McDaniel Marshall Trust
SunTrust Bank Atlanta Foundation
Greene-Sawtell Foundation
Tull Charitable Foundation Inc.
UPS Foundation
U.S. Agency for International Development
W.M. Keck Foundation
Wachovia Bank N.A.:
David, Helen and Marian Woodward Fund
Ida A. Ryan Charitable Fund
Price Gilbert Jr. Charitable Trust
Mary Allen Lindsey Branan Foundation
Atlanta Foundation
Wachovia Bank of Georgia
Wachovia Foundation Inc.
Wachovia Trust Services

PRESIDENT’S TRUST—
SILVER

Lifetime gifts totaling
\$500,000–\$999,999

- C.L. Chandler Jr.*
- Bill and Jill Dahlberg
- Ruth Dobbs
- Cherry* and Mary Emerson
- John H. Cowart Sr./John H. Cowart Family Foundation
- Richard and Susan Lenny
- R. Charles Loudermilk Sr.
- Henry* and Nancy* Miller
- Bernard* and Eugenia* Ramsey
- Herman J. Russell Sr.
- Margaret A. Staton
- Joseph and Lou Taylor
- American Foundation for Hellenic Studies
- The Atlanta Journal-Constitution
- CLC Foundation Inc.
- Callaway Foundation Inc.
- Carl R. Zwerner Philanthropic Fund
- David and Lucile Packard Foundation
- Delta Air Lines Foundation
- Estate of Virginia Ezzard
- IBM Corporation
- Jim Cox Jr. Foundation
- KPMG Foundation
- The Kresge Foundation
- Lend Lease Real Estate Investments Inc.
- Marcus Foundation
- Henry F. McCamish Jr./McCamish Foundation
- National Philanthropic Trust
- New United Motor Manufacturing Inc.
- PeopleSoft Inc.
- Pew Charitable Trusts
- Reading Recovery Council of North America
- RealtiCorp 528 LLC
- Southern Company
- Starr Foundation
- Tenet Healthcare Foundation
- Toyota Motor Corporation

PRESIDENT’S TRUST—
BRONZE

Lifetime gifts totaling
\$250,000–\$499,999

- Anonymous
- Angie and Sam Allen
- Leila Armknecht
- M. Bobbie Bailey
- Ken and Kathy Bernhardt
- Richard E. Bowers
- Bennett A. Brown III
- E. Ted Byers
- Bobby Lee Cook
- Charlotte Brown Dixon
- Michael D. and Anne Deeley Easterly
- Sidney* and Clara Feldman
- Patrick L. Flinn
- J. Michael Gearon Jr.
- Catherine C. Henson and Chris Carpenter
- Wayne S. Hyatt
- Jack and Patricia Kelly
- Noah* and Alice* Langdale

- Kenneth and Mary Matheny
- Michael and Enid Mescon
- Lawton M. Nease III
- Katherine Ohlhausen
- Carl and Gretchen Patton
- Bill and Susan Reeves
- Arthur M. Blank Family Foundation
- C.R. Bard Inc.
- BellSouth Foundation
- Charles Loridans Foundation Inc.
- Charles Stewart Mott Foundation
- S. Truett Cathy/Chick-fil-A Inc.
- The Coca-Cola Company
- Deloitte Services
- Deloitte and Touche Foundation
- Equifax Foundation
- Georgia Real Estate Commission
- Georgia-Pacific Foundation/Georgia-Pacific Corporation
- Jesse Parker Williams Foundation
- J.W. and Ethel I. Woodruff Foundation
- Jewish Federation of Greater Atlanta Inc.
- Kaiser Permanente
- Kathleen D. Crouch Trust
- Mark and Evelyn Trammell Foundation Inc.
- Mary Alice and Bennett Brown Foundation Inc.
- Munich Reinsurance Company
- New York Life Foundation
- PricewaterhouseCoopers LLP
- Raytheon Company Charitable Gift Fund
- Michael Carlos*/Thalia and Michael Carlos Foundation
- Towers Perrin
- Turner Broadcasting System Inc.

PRESIDENT’S TRUST

Lifetime gifts totaling
\$100,000–\$249,999

- Anonymous
- James and Kathryn Adams
- Thomas E. Aderhold
- Douglas and Sandra Bergeron
- G. Dennis and Kathy Berry
- Paul F. Bowles*
- W. Lee Burge
- Almand “Bo” Carroll*
- William* and Mary Colburn
- James and Patricia Copeland
- Alonzo A. Crim*
- Jarrett L. Davis
- H. Talmage Dobbs Jr.*
- R. Howard Dobbs Jr.*
- Terry and Marilyn Dornbush
- Julian W. Eidson
- Evern Cooper Epps
- A.L. Feldman*
- R. Brad and Marie Foster
- William and Bebe Hatcher
- Drada and Duane Hoover
- Leyton B. Hunter*
- David G. Jones
- James A.* and Alice Kaufmann
- Florence Kopleff
- Billie Lowery*
- Margaret Lupo*/Merle K. Lott Trust
- Ralph and Margaret* Moor

Edward E. Noble
William C. Pate and Judy Trotochaud
Kenneth Reid
James A. and Gail Stark
Marie H. Starks
David A. Stonecipher
J. Grover and Catherine Thomas
Paul Wachter
Leszek Wegrzyn*
Bruce and Jeanene Weiner
Ernest G. Welch
Frances Welch
Steve* and Diana* Woodruff

AARP Andrus Foundation
AirSept Inc.
American Bankers Insurance Group Inc.
American Heart Association
American Hotel & Lodging Foundation
American International Group Inc.
Andreas Foundation
Andrew and Eula Carlos Foundation Inc.
The Annie E. Casey Foundation
Archer Daniels Midland Company
Argus Financial Software
Arthur Andersen LLP Foundation
Atlanta Chapter of RIMS
Atlanta Music Festival Fund
BBDO South
Bausch and Lomb
Bergeron Family Trust
Boeing Company
Camden County Sheriff's Office
Charles B. Rice Sr./Charles and Catherine B. Rice Foundation
CIBA Vision
Century 21 National Advertising Fund
Chubb Corporation
Continental Telecom Inc.
Covenant Foundation Inc.
Deere and Company
Delta Air Lines Inc.
DuPree Foundation
Ernst and Young Foundation
Estate of Louis S. Brook
Estate of Ben F. Johnson Jr.
Estate of William E. and Victoria O. Farnell
Estate of James Aron Kaufmann
Estate of Howard S. Starks
Exxon Education Foundation
Keith Alan O'Daniel/F.A. O'Daniel Foundation
Fidelity Charitable Gift Fund
Fitel/Lucent Technologies
Georgia Collaborative to Improve Care at End of Life
Georgia Health Foundation Inc.
Hasbro Children's Foundation
Helene Fuld Health Trust, HSBC Bank USA, Trustee
ING Life of Georgia
International Association of Fairs and Expositions
International Association of Machinists and Aerospace Workers
Iowa Child Foundation
Jack Tarver Foundation
James M. Cox Foundation of Georgia Inc.
James S. Kemper Foundation
Jefferson-Pilot Corporation

John H. and Wilhelmina D. Harland Charitable Foundation Inc.
KPMG
Katherine John Murphy Foundation
Kenneth M. England Foundation
Kinetic Biosystems Inc.
Lettie Pate Evans Foundation
Livingston Foundation Inc.
McDonnell Douglas Foundation
Mills B. Lane Memorial Foundation
National Association of Exposition Managers Foundation Inc.
National Geographic Society Education Foundation
The New York Community Trust
Organized Labor and Workmen's Circle Awards Banquet
Payne Fund
Real Estate Alumni Club/Atlanta Board of Realtors Education Fund
Rich Foundation Inc.
Salisbury Community Foundation Inc.
Schwab Charitable Fund
Sears
Southeastern Bankruptcy Law Institute Inc.
Southern Company Services Inc.
Spencer Educational Foundation Inc.
State Farm Companies Foundation
Sun Microsystems Inc.
Susan G. Komen Breast Cancer Foundation
U.S. Chamber of Commerce
U.S. Disabled Athletes Fund Inc.
The Vasser Woolley Foundation Inc.
Whitehall Foundation Inc.
William Bingham Foundation
William M. Suttles Foundation
Zygogen LLC

* indicates deceased donor



THE HERITAGE SOCIETY

Established in 1989, The Heritage Society recognizes alumni and friends who have included the Georgia State University Foundation in their estate plans. The members have made highly personal and enduring gifts to ensure the long-term security and excellence of the university. Eligible gifts include bequests and estate gifts, IRAs and retirement plans, charitable gift annuities, charitable remainder trusts, gifts of residence or farm with retained life estate, charitable lead trusts and life insurance policies. For more ideas and information, please contact Christine Butler Eckoff at 404.413.3425 or ceckoff@gsu.edu.

~ Indicates new members in 2006–2007

Indicates new members in 2007–2008

William H. and Eloise M. Abbott

James M. Adams Jr.

Anonymous [23]

Janice Arsan

John W. Baker

Richard K. Babush#

E. Jo Baker-Henry

J. Fred and Linda Bailey

C. Duncan Beard#

Yezdi and Perviz Bhada#

Kenneth J. Black, Jr.*

Boyd J. Blevins*

David C. Blumenfeld

Thomas and Beth Ann Boland

Thomas J. Bremer#

Agnes C. Brook*

Louis S. Brooke* and Mary F. Brooke*

M. Steven Brotherton

Bennett A. Brown III

Brian S. Brown

John H. Bullock

W. Lee Burge and the Burge Family

Almand "Bo" Carroll*

Martha Baum Sikes Carlton

Raymond and Karen Cash

J. D. and Lenora* Caswell

Willie Mae Cathcart*

Burton Cloud*

H. Vincent Clanton

Michael J. Coles and Donna Novak Coles

Devon S. Collins

Lynn W. Connolly*

James and Patricia Copeland

Robert S. Crane*

John A. Crawford

Kathleen D. Crouch*

Bill and Jill Dahlberg

Thomas R. Daniel, Jr.

and Susan Brooks

Kenneth Davis*

Malcolm Davis*

M. Eleanor Davis*

Ralph Davis, Jr.

Sam J. Davis

William G. Densmore Jr.*

Suzanne F. Donner

Hugh L. Durham

Michael D. and Anne Deeley Easterly

Norman* and Mildred* Elsas

Richard A. Elmer and Katherine R. Lloyd

Virginia Ezzard*

Conrad E. Faust*

William E.* and Victoria Farnell

Patrick and Colleen Flinn

Thomas F. Flournoy III

Diane L. Fowlkes

Daniel Paul Franklin

Thomas B. Gilmore and Virginia A. Gilmore-

Donald S. Gingrich
 William O. Goodwin
 Emily Graham*
 Steven H. Haase
 William and Betty Hatcher
 J. Rhodes Haverty~
 Kathryn Johnson Hunter*#
 Jay B. Haney and Anne Page Mosby
 William C. Hatcher
 Ronald J. Henry and Jan S. Kettlewell Henry
 Kenneth and Denise Hill
 Richard E. Hodges
 Katy L. Hope*
 Henry R. Hunter*
 M. Christine Jacobs
 Ernest Jenkins Jr. *
 Ben F. Johnson Jr. *#
 James Aron Kaufmann*
 Frances M. Kocher*
 Roland J. Knobel~
 Florence Kopleff
 W. Edmond and Cecil Laird
 Noah* and Alice* Langdale
 William D. and Florence E. Lathbury#
 Waldtraut Lavroff
 Jay Levine*
 J. Kenneth Lesley* and Loyce H. Lesley#
 Tom and Patty Lewis
 Edith Daniel Little*
 William G. Loventhal III
 Craig P. Mackenzie
 Kenneth B. and Mary A. Matheny
 Louise M. McGuire
 David M. McKenney
 Elizabeth M. Mercer*
 Richard and Kirsten Meneghello
 Ralph C. Moor

Katherine B. Moore
 Kenneth J. Murphy*
 Lawton M. Nease III
 John C. Nelson
 J. Warren Newman*
 William A. Pannell
 Carl and Gretchen Patton
 Alwyn V. Powell
 James E. Prickett
 Ned and Marsha Richards
 James R. Rowley
 William Rutherford*
 Naomi Satterfield*
 Kay R. Shirley
 Marty Sik
 Daniel T. Sims and Fredrick V. Sherwood*
 Douglas K. Smith*
 Evelyn M. Sohn
 Howard S. Starks*
 William Price Vaughn*
 Richard and Ardith Vines~
 Bailey Wade*
 Ethel Louise King Wade*
 Ernest G. Welch
 Frances Welch*~
 Alfred Williams*
 Ralph H. Williams
 Kirk S. Wimberly III
 Wayne and Rebecca* Woody
 Alice C. Young#



HONOR ROLL

This list recognizes gifts from \$250 to \$50,000 or more that were made between July 1, 2007 and June 30, 2008. Support from the following individuals and organizations makes Georgia State the leading research university it is today.

THE PRESIDENT'S SOCIETY

Patton Circle (\$50,000+)

Douglas and Sandra Bergeron
G. Dennis and Kathy Berry
Bobby Lee Cook
Bill and Jill Dahlberg
Florence C. and Harry L. English
Thomas and Louise Glenn
Robert E. Heck
Catherine C. Henson and Chris Carpenter
David G. Jones
Vesta O. Jones
Jack and Patricia Kelly
R. Charles Loudermilk Sr.
William C. Pate and Judy Trotochaud
Parker and Janet Petit
Roger K. Quillen
Charles B. Rice Sr.
J. Mack and Nita Robinson
Herman J. Russell Sr.
Howard Smuschkowitz
Joseph and Lou Taylor
Bruce and Jeanene Weiner

Anonymous
Arthur M. Blank Family Foundation
Atlanta Law School
Bergeron Family Trust
C. F. Foundation Inc.
CLC Foundation, Inc.
Camden County Sheriff's Office
Charles Loridans Foundation Inc.
The Coca-Cola Foundation
Community Foundation for Greater Atlanta Inc.
Cook & Connelly
Estate of Kathryn J. Hunter
Fisher & Phillips LLP

Georgia State University Research Foundation Inc.
Georgia Baptist Health Care System
Georgia Institute of Technology
J. Mack and Nita Robinson/J. Mack Robinson Foundation
John and Mary Franklin Foundation Inc.
Johnny Mercer Foundation
Kaiser Permanente
Lettie Pate Whitehead Foundation Inc.
Marcus Foundation Inc.
Mark and Evelyn Trammell Foundation, Inc.
National Philanthropic Trust DAF
Parker H. Petit Charitable Lead Trust
Pittulloch Foundation
R. Howard Dobbs Jr. Foundation Inc.
Robert W. Woodruff Foundation
Charles B. Rice Sr./Charles and Catherine B. Rice Foundation
U.S. Chamber Of Commerce
Wilbur and Hilda Glenn Family Foundation
William H. Pitt Foundation Inc.

THE PRESIDENT'S SOCIETY

Langdale Circle (\$25,000-\$49,999)

R. Lawrence Ashe Jr. and Kathy B. Ashe
Edward H. Bullwinkel
Ellen L. Evans
Bradford and Patricia Ferrer
David H. Flint
Frank and Courtney Hanna
George W. McKerrow Jr.
James A. and Gail Stark
Margaret A. Staton
J. Grover and Catherine Thomas
John F. Ward

Joseph Weber
Jeffrey and Brenda Wegrzyn
Andrew and Carolyn Young

Anonymous
A.G. Edwards & Sons Inc.
Ambling University Development Group LLC
Atlanta Legal Aid Society Inc.
Bank of America Corporation
Bank of America Foundation
Berner Charitable and Scholarship Foundation
Coca-Cola North America
Danish Agency for Science, Technology, and Innovation
General Motors Corporation
Georgia Power Foundation/Georgia Power Company
Hardin Construction Company LLC
Ida A. Ryan Charitable Fund: Wachovia Bank, NA
International Association of Machinists & Aerospace Workers
Johnson & Johnson Vision Care Inc.
KPMG Foundation
MPS Group
PotatoFinger Snack Foods Inc.
Schwab Charitable Fund
Soliant Health
Sutherland
The Coca-Cola Company
The Joseph & Felicia Weber Family Foundation Inc.
UPS Foundation
The Winston-Salem Foundation
Turner Broadcasting System Inc.

THE PRESIDENT'S SOCIETY

Sparks Circle (\$10,000–\$24,999)

Lauren and Walter Adamson
Randall L. Allen
Angie and Sam Allen
Richard and Barbara Anderson
Leila Armknecht
William and Margaret Balzer
Ken and Kathy Bernhardt
G. Niles Bolton
Estate of Louis S. Brooke
Bennett A. Brown III
Maxwell M. Burns
Lloyd and Linda Byars
Kenneth G. Byers Jr.
Thomas D. Christopoul
George M. Coleman Jr.
James and Patricia Copeland
Robert and Barbara Crown
David A. Deeter
Charlotte B. Dixon
Betty H. Dunn
Ronald J. Freeman
Joseph Gamberale
Miles L. Gammage
Bill Hitchens
Ralph and Marjorie Knowles
Florence Kopleff
N. Michael Langdale
Richard and Susan Lenny
Kenneth and Donna Lewis
David and Barbara Lowenkopf

George and Lee Lumpkin
John and Kay Marshall
Kenneth and Mary Matheny
Katherine Ohlhausen
E. Vachel and Shirley Pennebaker
Richard Pennington
John and Jan Portman
Mabel D. Reeder*
John Reisman
Lee E. Rhyant
N. Allen Robertson
Alan and LuAnn Rockett
Daniel Shak
Kelly W. Smith and Virginia C. Avery
John D. Snodgrass
Mark Snyderman and E. Vaughn Dunnigan
Marko Sonnenberg
Kenneth Stiles
James B. Tafel
Peter Tongren
Dexter B. Warrior
Bryant and Dorothy Yunker

AGL Resources Inc.
American Bankers Insurance Group Inc.
Arnold Foundation Inc.
Atlanta Chapter of RIMS
Atlanta Music Festival Fund
Board of Commissioners of Fulton County, Georgia
Bondurant, Mixson & Elmore LLP
Bryant & Nancy Yunker Foundation
Bway Corporation
Byers Engineering Company
Carlyle Fraser Employees Benefit Fund
ChelRon Enterprises Inc.
City of Atlanta
Deloitte & Touche Foundation
Doffermyre Shields Canfield Knowles & Devine
Fidelity Charitable Gift Fund
Holder Construction Company
Jesse Parker Williams Foundation
Jewish Federation of Greater Atlanta Inc.
John H. and Wilhelmina D. Harland Charitable Foundation Inc
The Jonathan M. Tisch Foundation
Johnson & Freeman LLC
Liva Associates LLC
Lockheed Martin Aeronautical Systems
Marquis Jet
Mary Alice and Bennett Brown Foundation Inc.
Miles L. Gammage P.C.
Munich American Reassurance Company
Objective Management Group Inc.
Open Systems Inc.
Organized Labor & Workmen's Circle Awards Banquet
Payne Fund
Price Gilbert Jr. Charitable Trust: Wachovia Bank, NA
Robert and Polly Dunn Foundation
Saudi Arabian Oil Company
Schreeder Wheeler & Flint LLP
Snodgrass Foundation
Somerset Shore Associates Inc.
Southeastern Regional Reading Recovery Association
State of Georgia Department of Public Safety
State of Tennessee

SunTrust Directed Funds: SunTrust Bank
 Atlanta Foundation
 Thomas H. & Mabel Dorn Reeder Foundation
 Toyota Motor Sales, USA Inc.
 Troutman Sanders LLP
 University System of Georgia Foundation Inc.
 University of Copenhagen
 Wendi & Joseph B. Rose Foundation

Robert G. Sproule
 Juanita S. Stokes
 James A. Sykes
 Timothy and Kimberly Trankina
 Judith J. Valor
 Richard A. Vines
 Bob and Lois Weiner
 W.C. Wyatt Jr.

THE PRESIDENT'S SOCIETY

Kell Circle (\$5,000–\$9,999)

Anonymous
 Randall R. Addington
 Miles and Elaine Alexander
 Margaret L. Andersen
 Henri and Marie Barguirdjian
 Barry N. Berlin
 W. Frank Blount
 Thomas D. Body III
 Richard E. Bowers
 Barbara S. Brannon
 Mimi Breeden
 Anthony and Mary Burger
 Mark S. Burgessporter
 Dennis and Janel Byerly
 Margaret P. Cooley
 G. Rankin and Sandra Cooter
 Stacey Cotton
 Larry M. Dingle
 James Dykhhouse
 Patrick L. Flinn
 Dan Flynn
 Michael J. Gallivan
 Jim Griffin and Letha Yurko-Griffin
 Jefferson and Amy Harralson
 Darryl and Michelle Harris
 Joe and Elizabeth Harris
 William and Bebe Hatcher
 Ronald J. Henry and Jan S. Kettlewell Henry
 A. Faye Borthick and Walter R. Herndon
 John D. Hogan
 H. Fenwick Huss
 Richard Jacobson
 Bethew B. Jennings III
 William Jennings
 J. Kenneth Lesley*
 Loyce H. Lesley
 Tom and Patty Lewis
 Kay H. Logan
 Eugene M. Lopp
 James L. Maddex Jr.
 Mary A. and Terry McElroy
 Anthony and Jackie Montag
 Manoj and Renee Moondra
 David and Cindi Oakey
 Phillip and Barbara Oneacre
 Scott and Kathryn Petty
 Kirk and Victoria Posmantur
 Nancy E. Peterman and Michael F. Pratt
 Jerry J. and Usha Rackliffe
 Wayne and Rubye Reid
 H. Jerome Russell Jr.
 Tom Salvaggio
 Deen Day Sanders
 Joseph D. Sansone
 Paul R. Shlanta
 W. Clayton and Holly Sparrow

Anonymous
 ACE American Insurance Company
 AT&T Mobility
 Aflac Foundation Inc.
 After School All-Stars
 Alliance Bernstein
 Allstate Insurance Company
 Alston & Bird LLP
 American Humanics Inc.
 American Southern Insurance Company
 Andrew J. Young Foundation
 Andrews, Knowles & Princenthal LLC
 Aon Foundation
 Atlanta Bar Association
 Atlanta Classic Foundation
 Atlanta Classic Foundation Charities Inc.
 Atlantic Philanthropies Inc.
 Axxess Luxury & Lifestyle LLC
 Bloomingdale's Inc.
 Cecil B. Day Family
 The Circle Group LLC
 City of Marietta/Board of Lights & Water Works
 City of Miami
 Club Managers Association of America
 Cooley Foundation
 Covington Police Department Narcotics Unit
 Cypress Communications Inc.
 David Oakey Designs
 Emory Crawford Long Hospital
 Epstein Becker & Green P.C.
 Foundation of the Variety Club of Georgia Inc.
 Frances Hollis Brain Foundation Inc.
 Georgia Power Foundation/Georgia Power Company
 Georgia School Superintendents Association
 Georgia State University Alumni Association
 Graff Diamonds USA Inc.
 Halpern-Oppenheimer Family Foundation Inc.
 Hilb Rogal & Hobbs
 Irene Emery Goodale Foundation
 Katherine John Murphy Foundation
 Kay H. Logan Revocable Trust
 Kilpatrick Stockton LLP
 Kimberly-Clark Corporation
 Littler Mendelson
 MWY Enterprises Inc.
 Marsh USA Inc.
 McDonald's Corporation
 McGriff Seibels & Williams Inc.
 McKenna Long & Aldridge LLP
 Men's Senior Baseball League of Atlanta Inc.
 Metropolitan Atlanta Corporate Volunteerism Council Inc.
 Mueller Co.
 Navigant Consulting
 Needle & Rosenberg P.C.
 Nike Inc.
 Northern Trust Company
 Ogletree Deakins Nash Smoak & Stewart P.C.
 PLUS Foundation

Peachtree Settlement Funding Corporation
Powell Goldstein LLP
Power Design Inc.
PricewaterhouseCoopers Foundation
Public Interest Law Association
Richard Bowers and Company
Rosser International
Society For Information Management Atlanta Chapter
Southern Company Services Inc.
Specialty Finishes Incorporated
Stasco Mechanical Contractors Inc.
Swift Currie McGhee & Hiers LLP
Taste of Atlanta Inc.
Thomson West
Towers Perrin
Travelers Insurance Company
UPS

THE PRESIDENT'S SOCIETY

University Circle (\$2,500–\$4,999)

Wesley C. Achey
James M. Adams Jr.
Helen and John Aderhold
H. Elliott Albers
Gary and Philicia Andrews
Steven G. Asplundh
John L. Avery
Howell Barbee
Edward and Roberta Barili
Richard and Barbara Baskerville
Alfons and Barbara Baumstark
Dorothy T. Beasley
Yezdi and Perviz Bhada
David Blumenfeld
Steven and Beth Bowles
David and Ellen Boykin
Cassady V. Brewer
Harvey J. Brightman
Floyd I. Brown
Andrew and Lisa Burnett
Martha B. Carlton
Christopher J. Chan and Melody L. Hunter
Matthew B. Clark
Charlotte A. Combre
Philip H. Cook
Gregory R. Crochet
Mildred L. Davis
Richard A. Elmer and Katherine R. Lloyd
Robert and Kathryn Elsaesser
Jim Ewing
Richard K. Foley
Scott and Marie Frank
William and Bonnie Fritz
David H. Gambrell
Donald S. Gingrich
Virginia S. Gorday
Duncan and Julia Gray
Griff Griffin
David F. Haddow
Sidney and Mary Harris
Irene C. Harrower
Michael D. Hobbs Jr.
Charlene S. Hurt
Mie Igarashi
L. Norwood Jameson
John and Jill Jinks
David and Deana Johnson

Keith Kepler
Craig C. Knowles
Jeffrey and Pamela Kuester
Richard K. Little
Kevin E. Lofton
Charles and Laura Long
Peg M. Lowman
Isaiah and Sharon Mapp
Sam Massell
Thomas E. McClendon
William L. McLain
Gary and Teresa Meggs
Robert A. Meier
Natasha H. Moffitt
William and Joyce Nelson
Carl and Gretchen Patton
Mark A. Phillips
Rick Phillips
George E. Pierce
James and Lorene Pilcher
Luis and Abrenda Planas
Adam P. Princenthal
Bill and Susan Reeves
Joseph and Karen Reinkemeyer
Michael B. Russell
Arthur J. Schwartz
J. Wendell Sealey
Lesli R. Seta
Russell L. Slider
Jim Sprouse
D. Kent Stier
Phang-Cheng and Ying-Mei Tai
Leslie F. Taylor
Kirby A. Thompson
Linda M. Thorpe
Arthur G. Walsh Jr.
McRae and Brenda Williams
Ralph Wilson
Barbara C. Woodring
Patricia Yarbrough
James and Michele Young

AEGIS, Associated Electric & Gas Insurance Services Ltd.
AMC Inc.
AT&T Inc.
Allied Barton Security Services
Arnall Golden Gregory LLP
BAR/BRI Bar Review of Georgia
BB&T
Beecher Carlson Holdings Inc.
BellSouth Corporation/BellSouth Telecommunications
CNA Foundation
Calorie & Pulse Technologies LLC
Cantor Colburn LLP
Charles Longstreet Weltner Family Law
City of Sandy Springs
Coleman Talley LLP
Colemout Brokerage Group Inc.
Darby & Darby P.C.
DeKalb Medical Center
Duane Morris LLP
Equifax Foundation
Finnegan, Henderson, Farabow, Garrett & Dunner LLP
First Tennessee Bank
Georgia Hotel & Lodging Association
Grant Thornton Foundation
H.J. Russell & Company

Halliburton Foundation Inc.
 Harvey J Brightman Revocable Trust
 Havertys Furniture Companies Inc.
 The Home Depot USA Inc.
 IBM International Foundation
 ING Americas
 Insight Inc.
 Institute of Electrical and Electronics Engineers Inc.
 Jinks Private Foundation
 King & Spalding LLP
 Kiwanis Foundation of Atlanta Inc.
 Lanier Corporation
 Merchant & Gould LLC
 Morgan Stanley
 National Automatic Merchandising Association
 Norfolk Southern GGF Matching Gift Program
 One Alliance Center LP
 Phillips & Associates Inc.
 Porter Novelli
 Pritchard & Jerden Inc.
 Rogers & Hardin
 SDC Architectural Concrete Finishes
 Saint Joseph's Hospital
 Saint Joseph's Mercy Foundation
 Seyfarth Shaw LLP
 Southwire Company
 Speed & Seta LLC
 State of Georgia State Board of Pardons and Paroles
 TERMA
 Presser Foundation
 Thomas H. Lanier Foundation
 Thomas Kayden Horstemeyer & Risley LLP
 United Way of Metropolitan Atlanta Inc.
 Windham Brannon Foundation Inc.
 Woodcock Washburn LLP

Barry and Elina Brager
 Frank and Jacquelyn Brandon
 Mitchell V. Brannen
 Thomas G. Brashear
 William and Kathryn Bridges
 Benjamin D. Briggs
 William D. Brook and Joanna Buffington
 David M. Brown
 David W. Brown
 Donna T. Brown
 Thomas E. Brown Jr.
 F. Melvin Burton
 Deborah K. Butler
 Nancy A. Byron
 Sylvia B. Caley
 George M. Callahan Jr.
 Carole Z. Carreker
 Chason A. Carroll
 J. D. Caswell
 Van E. Caswell and Wimberly Warnock
 Philip and Mazie Causey
 Barbara L. Chastain
 David M. Cheshier
 Ruth E. Coan
 David and Carolyn Cohen
 Ronald and Maryann Colarusso
 William and Mary Coleman
 Kurt Collier
 Brian M. Conlon
 Ben and Marsha Cook
 Phillip H. Cook
 Ronald N. Cook
 John W. Cooledge
 James Corbitt
 Douglass F. Covey
 Joel and Geraldine Cowan
 Kay C. Craigie
 Lisa A. Cranwell-Bruce
 Alben B. Curtis
 Lee L. Curtis
 Michael Dalton
 Jonathan J. Davies and Sheila H. Lee
 Erroll and Elaine Davis
 R. Means Davis Jr.
 Ralph Davis Jr.
 Read and Diane Davis
 Sam J. Davis
 Stephen W. DeVinney
 Louis and Carmen Dekmar
 Marcus Delgado
 Jerry and Harriet Dempsey
 Michael C. Dendy
 Charles and Jennifer Derby
 Julie Diaz
 Rene M. Diaz
 James R. Dillon Jr.
 David N. Dorough Jr.
 Keith Douglas
 Robert and Laetitia Dowd
 Donald S. Downing
 Irene M. Duhaime
 John and Sara Edgar
 Charles R. Edwards
 Donald H. Edwards Jr.
 W. Crawford Elliott
 Donald E. Ellis Jr.
 Martin and Anne Emanuel
 Ann H. Epps
 Daniel C. Erling

THE PRESIDENT'S SOCIETY

Presidents Circle (\$1,000–\$2,499)

Henry and Billy Aaron
 Kimberly A. Agnew-Heard
 Donald G. Ahearn
 Gary and Louise Alexander
 James and Marjorie Andrews
 Bobby C. Aniekwu
 Henry Anthony and Carol R. Geiger
 R. Byron Attridge
 Roy and Marilyn Bahl
 Marvin R. Banks Jr.
 Rodrick and Bridgett Barnes
 Robert and Jane Batten
 John and Rebecca Beam
 Bruce H. Becker
 Dan Benardot
 Amy R. Lederberg and Julian M. Bene
 Francis E. Beres
 L. Eugene and Rebecca Berry
 Timothy C. Beyer
 Marla F. Blackstone
 Clarence W. Blanton and Karen M. Vereb
 Ronald and Tracey Blasi
 Ursula N. Blumenthal
 Isa Blumi
 Judd L. Bobilin
 David L. Boehmig

John and Susan Euart
 Robert J. Evans
 Stephanie Everett
 Joe and Daphna Ezell
 Jimmy R. Faircloth Jr.
 Marjorie A. Fannon
 William R. Feldhaus
 Diane M. Fennig
 Jill J. Finan
 Lynn M. Finley-Davis
 Jim D. Flowers
 Ellyn Foltz
 Robert F. Fowler III
 Diane L. Fowlkes
 Janet L. Fox
 Teryl and Phyllis Frey
 Janet H. Friday
 Lee J. Friedman
 Robert D. Frisbee
 Creighton Frommer
 Thomas and Donna Fullilove
 Raye J. Fulwood
 William J. Funk and D. Gayle Gellerstedt
 M. Gordon Gaddy/Fortis Foundation
 Jinshui Gao and Hua Yang
 Jerry and Jan Geiger
 James C. Germany Jr.
 Jeffrey A. Gilder
 Marjorie L. Girth
 Merrilee A. Gober
 Joel Goldman
 Leon and Betty Goldstein
 Larry E. Gramlich
 Michael B. Graves
 Patricia S. Greco
 Janice C. Griffith and Richard Perles
 Angelo and Valerie Guagliano
 John B. Haberlen
 John W. Hall
 Frank and Barbara Hannah
 Norman and Sally Harbaugh
 James and Michelle Harkins
 J. Rhodes and Elice Haverty
 Melvin and Lucille Hayden
 Robert and Janice Hayes
 Leonard J. Haynes
 Russell and Suzanne Heil
 Daniel E. Hendricks III
 Lea L. Henry
 Kerry L. Heyward
 Seabie W. Hickson III
 Julia Hilliard
 J.R. Hipple
 David M. Holland
 Leonard J. Hope
 W. Pat and Ann Hopkins
 Geoffrey T. Horst
 John and Sally Howard
 Jann C. Howell
 Holly H. Hughes
 David J. Hungeling
 Leland D. Husband
 Michael B. Husk
 Martin and Cennette Jackson
 Terry S. Jacobs
 Adam G. Jett Jr.
 Ajay K. Jindia
 Nancy P. Johnson
 William and Phyllis Johnson
 Beth H. Johnston
 Wesley J. Johnston
 Gabriel U. Jonas
 Andrea C. Jones
 Andrew T. Jones
 Dawn M. Jones
 Margaret A. Jones
 Jayant and Alka Kale
 Randy W. Kamphaus
 Mark and Mary Kassiss
 Barbara B. Kaufman
 Patrick E. Keefe
 Julie A. Keith
 Mike and Beth Kenny
 Linda K. DiSantis and George R. Kerr Jr.
 Emilie M. Khair
 John Killorin
 D. Kimbrough King Jr.
 K. N. King and Susan A. Cole
 Ruth A. King
 Michael B. Kirschner
 Robert and Lynn Koch
 Chad Koenig
 Phyllis A. Kravitch
 Richard and Lana Krebs
 Richard and June Krise
 Kevin S. Kudlac
 Cynthia J. Kuhlman
 David L. Kuniansky
 Marion L. Kuntz
 Michael B. Landau
 Paula Lawton-Bevington
 Jonathan and Marlo Leach
 Glenn L. Lee and Barbara B. Jeanneret
 John M. Leonard
 William R. Lewis
 Peter M. Lindsay
 Joel I. Liss
 Ivor J. Longo
 Ronald and Thelma Lynch
 Charles J. Mace
 Morris W. Macey
 Douglas E. Magruder
 Cynthia H. Maloy
 David and Ana Martin
 Paul L. Martin
 Roger G. Martin
 Joe Massari
 Steve A. Massell
 Sue S. Massey
 Walter T. Massey Jr.
 Eric G. Maurer
 Hal and Susan McAlister
 R. Gerald McCarley
 Charles E. McDonald Jr.
 Howard and Patricia McHenry
 Julie M. McIntosh
 David M. McKenney
 Jeffrey J. McKillop
 Jon M. McLamb
 Michael W. McLaughlin
 Ephraim and Jane McLean
 John F. McMullan
 Michael and Leanne Mehrman
 Michael and Enid Mescon
 Peter N. Meso
 Rob W. Metcalf Jr.
 Michael and Theresa Metzler
 Nat Milburn

Jeffrey D. Miller
Peter and Catherine Miller
Roger and Mary Kay Miller
Peter A. Mitchell
Robert E. Moore and Julie L. Hotchkiss
Robert Moore
Susan G. Moray
Libby V. Morris
Robin D. Morris and Elisabeth Groth
Grady and Jeanne Morton
Carlton Mullis
Gar Muse
Vikram E. Naaidu
David C. Nachman
William Newnam and Carol K. Winkler
Colleen M. O'Rourke
John and Nancy Oglesby
Robert and Barbara Oldham
Mark and Elizabeth Olson
Steven D. Olson
Benjamin M. Oviatt
Jean E. Padberg
Sarah L. Pallas
Michael D. Palmer
Margaret R. Pannell
William A. Pannell
Iqbal F. Paroo
Richard A. Parrish Jr.
Carl and Libby Patrick
William S. Patrick
Dennis and Debbie Patterson
Michael J. Pelt
George A. Perla
Jonathan Petcu
Randall and Diane Pettit
George and Elizabeth Pickett
Donald L. Pike
Victor G. Polizos
David A. Portwood
William D. Posey
Jeffery K. Pruett
George Rainbolt
Richard and Nancy Rank
William H. Rauschenberg Jr.
Joel W. Reed and Mary L. McCloskey
Joel and Jean Reeves
Kate H. Regan
Vincent Rehder
Maurice M. Richardson
Marvin O. Richter
Franklin M. Rinker
Susan Roberts
Troy A. Roberts
Roy B. Robinson III
Carolyn L. Robison
Paul Rooney
Paul and Sally Rosser
Benjamin S. Roth
Frank V. Rotondo
John W. Rowland
J. Peter Ruys
Greg J. Ryan
Harley E. Ryan
Karen Sabatino
K. James and Robin Sangston
Timothy and Louise Saponas
Robert D. Sattelmeyer and Leigh Kirkland
Christopher H. Savage
Monica Scarbrough

Henry Schachar
Heather Schafer
Mary Jo Schrade
Michael and Andrea Sellars
Donna D. Sellen
Michelle T. Shaw
William H. Shippen
Susan G. Shows
Herbert L. Silver
Joel Nils P. Sjolholm
Frank Slover
Barry A. Smedstad
Preston Snyder
Michael and Kathy Southern
Paul E. Sparks
James and Mary Sparrow
Misty M. Speake
Michael T. Springfield
Clifford and Beth Stanford
Jacien Steele
William P. Steinhaus
Jennifer Stephen
Dante S. Stephensen
Michael and Donna Stevens
Steven W. Strickland
Barbara S. Sunday
Dorn H. Swerdlin
Elizabeth V. Tanis
Patricia E. Tate
Keith E. Taylor
Richard and Helen Taylor
William R. Thomas
Robert and Debra Thompson
Ellen E. Thrower
James and Phyllis Thrush
Arthur and Leslie Thurston
Shawn Tidwell
Willard and Wanda Timm
Russell Toal
Jackie L. Toney
Susan Toohey
Edgar and Julia Torbert
Kurt and Linda Travis
Mark Trivette
Lori Turbe
Roberta W. Turner
Jon Uhlir
Robert H. Ussery
Gordon and Julia Van Mol
Susan J. Kelley and Ronald F. Verni
Carolyn L. Vignery
Hoang M. Vo
James and Dale Voyles
D. E. Walden III
Jeff W. Walker
Joseph L. Walker
Binghe and Siming Wang
Thomas and Susan Wardell
Jeffrey L. Warwick
Kurt Wassenar
Herbert E. Waterhouse
James and Susan Weidner
Jerry M. Weil
Hugh W. Welborn
James R. Westbury Jr.
Scott and Bonnie Wharton
Michael L. Whipple
Stephen L. Whiten
Frank and Joy Whittington

Dennis A. Wigbels
 Thomas W. Williams Jr.
 J. H. Willingham
 J. Mack and Gwendolyn Willis
 James T. Willoughby
 W. David Wilson
 Gail K. Winkle
 Karen K. Wolter
 Erin Wrenn
 Calvin R. Wright
 John Wustman
 Anthony M. Yonnone
 Aliguma K. Young
 Leslie Zacks
 John and Barbara Zellner
 Mason Zimmerman

Anonymous
 A.G. Rhodes Homes
 ABE Enterprises Inc.
 Accountants One Inc.
 Advisor Charitable Gift Fund
 AirTran Airways
 American Academy of Religion
 American International Company Ltd.
 Atlanta Claims Association
 Atlanta Falcons Football Club
 Atlanta Fine Homes Sotheby's International Realty
 Atlanta First United Methodist Church
 Atlanta Opera Guild Inc.
 Atlanta Women in International Trade
 Auto-Owners Insurance
 Bank of America, N.A.
 Bankers Fidelity Life Insurance Company
 Betty and Leon Goldstein Foundation
 Blink Films
 Boardwalk Consulting LLC
 Brightworth LLC
 Buckhead Church
 CMC Rebar Carolinas
 Caraustar Industries Inc.
 Carter
 Caterpillar Foundation
 Cengage Learning
 ChoicePoint Inc.
 City of LaGrange
 Cobb County Community Services Board
 Cohen-Kogan Charitable Fund
 Community Foundation for Northeast Georgia
 Community Foundation of the Chattahoochee Valley
 CompuCredit
 Consulate General of Israel
 Cotton States Mutual Insurance Company
 Cousins Properties/Cousins Foundation
 Cox Communications Inc.
 Cox Enterprises Inc.
 Crawford & Company
 Crowe Chizek and Company LLC
 D.H. Griffin Wrecking Company Inc.
 DeKalb County Finance Department
 Deep Blue Insight Group Inc.
 Deloitte Services LP
 Delta Air Lines Foundation
 Dempsey Family Foundation
 Dempsey and Associates Inc.
 Diaz Foods
 Dixie Roof Decks Inc.

EdVenture Partners
 Emerald Group Publishing Ltd.
 Emeriti Association of Georgia State University
 Energy Insurance Mutual
 Epps Aviation
 ExxonMobil Foundation
 Fidelity National Title Insurance Company
 First American Title Insurance Company
 Fletcher Martin LLC
 Frazier & Deeter Foundation
 Frazier & Deeter LLC
 Friends of GILEE
 GE Foundation
 General Electric Company
 Georgia Association of Chiefs of Police
 Georgia Hospital Association
 Georgia Research Alliance
 Georgia-Pacific Corporation
 Gilbane Building Company
 Guardian Life Insurance Company of America
 Gwinnett Sprinkler Company Inc.
 HIPC
 Hill Kertscher & Wharton LLP
 Hipple & Co. Reputation Management
 Hope Baldauff Hartman LLC
 Hudson Family Charitable Foundation
 Hugh W. Welborn Attorney At Law
 ING Foundation
 ING Investment Management Americas
 IPinvestments Group LLC
 IREM - Atlanta Chapter*67
 Idlewood Supporting Foundation Inc.
 Integral Urban Investments LLC
 Ironshore Insurance Ltd.
 James M. Wilder & Ruth E. Wilder Foundation Inc.
 James R. Westbury Jr. P.C.
 James Starr Moore Memorial Foundation
 Japan America Society of Georgia Inc.
 Jean Padberg & Associates P.C.
 Jett & Liss
 Johnson & Johnson
 Jones Day
 Joseph and Florence Mandel Family Foundation
 KPS Technologies LLC
 Kathryn & William Bridges Family Fund
 Keever Dalton & Johnson Inc.
 King Real Estate Holdings LLC
 Kroger Company Foundation
 L. M. T. Inc. D/B/A Mac's Beer & Wine
 LMI Electrical Contractors Inc.
 Lana C. Krebs Foundation
 Lincoln Financial Group
 Lincoln Financial Group Foundation Inc.
 MAP Partners LLC
 MBTC Real Estate Inc.
 Marcus & Millichap Real Estate Investment Brokerage Company
 Massell Commerical Real Estate
 MaxBermuda
 Mehrman Law Office P.C.
 Melanol Foundation Inc.
 Michael W. and Kathy H. Southern Family Fund/Ayco Foundation
 Microsoft Corporation
 Monster Worldwide Inc.
 Newell Rubbermaid Inc.

Novare Group Holdings LLC
 Osiris Studio
 Perception Partners Inc.
 Pfizer Foundation
 Quaker Oats Company
 RBC Financial Group
 Resolute Construction Clean Up Services Inc.
 Roy Bahl Associates Inc.
 Russell New Urban Development LLC
 SAP America Inc.
 Sciele Pharma
 Shell Oil Company Foundation
 Shopping Center Group LLC
 Smith & Howard P. C.
 Sonoco Foundation
 Southern Company
 State Bar of Georgia
 State Farm Companies Foundation
 Steppersen, Inc. DBA Dante's Down The Hatch
 Strategic Legal Resources Inc.
 Student Trial Lawyer's Association
 Sun Bowl Association
 Tauber & Balser P.C.
 Tayco Contractors Inc.
 Technology Service Innovations LLC
 Terry Consultants Inc.
 Terry F. Barker Fund Inc.
 The Atlanta Christian Foundation
 The Erroll & Elaine Davis Charitable Gift Foundation/Ayco
 The Integral Group LLC
 The Security Executive Council
 The Weather Channel Inc.
 Thomas Concrete of Georgia Inc.
 Tull Charitable Foundation Inc.
 ValleyCrest Companies
 Vanguard Charitable Endowment Program
 Victor G. Polizos MD
 Visa International
 WHS Realty Inc.
 Washington Mutual Bank
 Washingtonville Soccer Shop
 Wells Fargo Insurance Services
 Southeast Inc.
 Wellstar Health System
 Whiting-Turner Contracting Company
 Williams Benjamin Benator & Libby
 Willis North America Inc.

Suttles Society (\$250-\$999)

Anonymous
 Jerry L. Aaron and Kay J. Bunch
 John and Ann Abbott
 Kevin D. Abernethy
 Francis H. Adams
 Martha S. Adams
 Claudia R. Adkison
 Brian A. Afanador
 Anane Aidoo
 Isabel M. Alcocer
 Jeffrey D. Aldridge
 Joseph and Anne Allen
 Mauricia J. Allen
 Paschal G. Allen
 Victoria H. Allen
 David L. Allison and Anna E. Hurlebaus
 Cathy M. Alterman

Robert and Judy Ambrose
 Reginald Anderson
 Michael W. Arasin and Kimberly A. Ellet-Arasin
 Lisa P. Armistead
 Frank A. Armstrong
 Gary Arnold
 Glenn Arnold
 Susan B. Austin
 Gabriel K. Azar
 John R. Baer
 Laurence and Terri Bagen
 Helen Bailey
 Ron and Deborah Bailey
 Wanda B. Bailey
 Edward H. Baker
 Paul V. Balducci
 Milton J. Ball
 Paul E. Balun
 Julia K. Bannerman
 John P. Barbee
 W. Daniel Barker
 Deborah J. Baro
 Natalie J. Batchelor
 Stephen C. Bateman
 Christopher and Janet Battel
 Dawn M. Baunach
 Claire E. Baxter
 John and Delia Baxter
 Gregory and Jill Beadles
 Frank H. Beard
 Asa T. Bearse III
 George and Judith Beasley
 Regina N. Beck
 William and Sherry Beckemeyer
 Cynthia J. Becker
 Ganiyu A. Bello
 Asher and Grace Benator
 John A. Bennett
 Linda B. Bennett
 Jay A. Bernath
 Eleanor Bernhardt
 Matthew and Natalie Bernstein
 Francisco J. Bethencourt-Diaz and Carmen Bohoyo
 Samuel E. Bettsak
 James D. Biles Jr.
 Charles E. Billiard
 Charles L. Birkinshaw Jr.
 Thomas E. Bishop
 Carol K. Black
 Mary J. Blackmon
 Colin and Jessica Blalock
 Donald R. Blalock
 Jane R. Blankenship
 Douglas W. Blanz
 Frederick and Karen Bleiberg
 James A. Blissit
 F. Richard Blue
 Leonard and Barbara Bock
 Carmen Bohoyo
 Robert D. Boone
 Britt Borders
 Nicholas M. Boryc
 Timothy and Angela Bouchard
 Jennifer H. Bowen
 Thomas and Janine Bowen
 Roswell and Barbara Bowers
 Denise E. Boyd

Charles L. Bradley
Thomas E. Branch III
Thomas Branch
Keith F. Brandon
Gary and Melissa Brennaman
S. Perry and Shirley Brickman
Stewart and Teresa Bridges
Thomas and Eugenia Brieske
Jason E. Bring
Allen J. Brock
Mary M. Brockington
Daniel d. Brondel
James L. Bross
George T. Brown
Kirk T. Brown
Lawrence and Beverly Brown
Murray L. Brown
Robert M. Brown, Sr.
William and Paige Brown
Amanda Brown-Olmstead
Barbara A. Browning
Edward L. Brownlee
Patricia A. Bruschini
Curtis H. Bryant Jr.
Mark and Melissa Bryson
Terry and Donna Buchanan
Steven C. Buckner
Timothy A. Bumann
Annelle N. Burch
Charles and Elke Burden
Michael D. Burks
Jeremy P. Burnette
John A. Burrison
Laura G. Burtle
Cleve Burton and Terri L. Brown
Kevin P. Byers and Sarah L. Cook
Frances L. Byrom
Dan T. Cahoon
Wanda L. Cahoon
Patrick Callahan
Richard D. Callihan
Todd A. Cameron
Damon D. Camp Jr.
Joy M. Campbell
Debra F. Cannon
Mark A. Carden
Phil H. Carlock
Jacqueline M. Carmichael
Jane R. Carriere
J. Randall Carroll
J. Thomas Carroll
J. Thomas Carroll III
Cathy A. Carter
Teresa L. Carter
Mary J. Casto
Thomas D. Caudill
Laura E. Cayce
Patricia M. Chalfant
Debra S. Chartash
Ling Chiang
David and Kimberly Childs
Yvonne R. Chrimes
Sean D. Christy
James and Lindsey Churchill
Kimberly E. Civins
Allen and Claudia Clark
John D. Clark
Susie Clark
Wendi L. Clifton

James G. Cochran Jr.
Gregory M. Cole
Jennifer M. Cole
Bettie T. Coley
Noshay L. Collins
George D. Cooke
N. Courts and Rebecca Cooledge
J. Clay Copher
W. S. Corder
W. Reynolds Couch
George S. Cowan
William and Kristie Cowan
Jeffrey and Ann Cramer
John A. Crawford
Benita C. Creacy
Mark S. Crews Sr.
Timothy J. Crimmins
Chris Crittenden
Deborah P. Crockett
Hannah Y. Crockett
Richard G. Croker
Ralph E. Cromer
Jimmy W. Crowe
Robert L. Crutchfield
Jeffrey D. Cunningham
Leslie C. Cunningham
Reese E. Currie
Kelly R. Curry
Daniel and Margaret Curtis
Gary and Linda Cutson
Cynthia M. Daley
Richard Dammer
Harry and Julie Dangel
Timothy H. Darnell
James F. Darsey
Walter and Jean Daves
Derek A. Davis
Douglas and Carol Davis
Janet E. Dawson
Elizabeth M. Day
Michael S. DeMaria
James T. Dean
Kelly M. Dean
Joseph R. Delgado
Nick J. Demos
Debra A. Denman
Francisco B. Deolano
Deon L. Deshields
Gayatri Deshpande
David W. Detjen
Alleen D. Deutsch
Jeffrey A. Diefenderfer
Lawrence A. Dietrich
Maureen M. Dinges
Richard D. Dix
Scott D. Dorfman and Susan M. Trotochaud
Robert F. Dow
L. Craig Dowdy
Edward M. Drohan III
Lalitia DuBose
George E. Duncan
William and Sharon Dunphy
John W. Duren
James and Marisa Durham
Russell D. Dye
Vickie B. Dye
John J. Dyer
Joyce Eagle
Lee Echols

Lois H. Edison-Jones
 Belinda E. Edwards
 Calvin and Nerida Edwards
 Philip and Judi Edwards
 Robert and Charlotte Efurd
 Joseph and Jacqueline Egresitz
 John P. Ehrensperger and Mary E. Sullivan
 Erling N. Eia
 Michael Eisenstadt
 John and Janet Elger
 Duffy G. Elliott
 Florida S. Ellis
 Marial L. Ellis
 Dixie K. Elmore
 Nancy J. Emmons
 James G. Emshoff
 Rita G. Engelhardt
 Alan R. England
 Erin Erskine
 Nancy M. Erwin
 Robert S. Estes
 B. Daniel Evans Jr.
 Cheryl C. Evans
 Soga O. Ewedemi
 Paul G. Farnham
 Marjorie H. Faust
 Danny and Lori Feig Sandoval
 Paul S. Fekete
 Lewis and LuEllen Feldman
 Carl and Heather Ferguson
 Thomas and Gail Feske
 Katharine M. Field
 Paul J. Fister
 Robert L. Fleshman
 Wing and Lillian Fok
 Holly S. Ford
 Frances J. Fowler
 Gregory D. Frady
 Cathie J. France
 Brooks S. Franklin and Maureen Keating
 Daniel P. Franklin
 James A. Franks
 Martin D. Fraser
 Ronni L. French
 Kathryn Fuller-Seeley
 Brent T. Fykes
 Janet A. Gabler-Hover
 Carolyn S. Gaik
 Charles A. Gallagher
 Sandra E. Garber and James D. Satterfield
 Stephen and Marianne Garber
 Doug and Robin Gardenhire
 Shepard and Jacqueline Faught
 Jennifer C. Garr
 Larry and Deborah Gaunt
 Mary Anne F. Gaunt
 Kim Gay
 Jonathan Gayles
 Michael A. Gerber and Barbara A. Brandt
 Martha S. Gerschefski
 David Gevertz
 Catherine A. Ghiglieri
 Shubha Ghosh and Sumita Chowdhury-Ghosh
 Douglas R. Gies
 Ralph A. Gilbert
 Charles R. Gillespie
 Matthew D. Gillett
 Lawrence and Patrica Gilmer
 Raymond and Jillian Giornelli

Margaret I. Godfrey
 Paul Goggin
 Burton and Barbara Gold
 Cheryl Goldsleger
 Jac L. Goldstucker
 Robert L. Goocher
 Irene E. Goodale
 Robert D. Gordon
 Sheryl A. Gowen
 Charles E. Graham
 Steve A. Grant
 Charles L. Grattan
 James C. Graves
 Robert A. Gray
 Rachelle R. Green
 Susanna F. Greer
 Mary G. Gresham
 Elbert B. Greynolds
 Ronald S. Griffin
 Ruby D. Griffin Geer
 Roger A. Grigg and Elizabeth Vantine
 Marvin and Linda Gross
 Richard Gudewicz
 Thomas N. Guffin Jr.
 Stuart Gulley
 Timothy J. Gunter
 Lee and Gina Hagan
 Charles and Rosemary Hall
 Alice A. Hamilton
 Mark R. Hammond
 Gary S. Hand
 Alice K. Hankla
 John P. Hanks
 Rebecca L. Hannan
 Randall and Kathleen Harber
 Jane G. Hardesty
 William and Alyson Hardin
 James D. Hargather
 Stephen and Jessica Harper
 Hubert L. Harris Jr.
 Lucas O. Harsh
 Samuel N. Hastings
 David and Alexandra Hautau
 Sarah J. Hawk
 Barry C. Hawkins
 Rudjard and Lorraine Hayes
 Camille L. Heath
 Magdalena M. Heim
 John and Sandra Helton
 Jesse E. Helvey
 Laurel E. Henderson
 Thomas M. Hendricks
 Robin M. Hensley
 Barry S. Herrin
 Sandra K. Herron
 David Herskovits
 Tawab and Harriet Hessam
 Timothy J. Heup
 Glenn H. Hewitt
 John F. Hicks Sr.
 Christopher and Adrienne Hill
 Herschel L. Hill
 James S. Hill Jr.
 Leo and Florissa Hill
 Robert and Sharon Hill
 Scott and Laura Hilsen
 DeAnna and Fred Hines
 Robert H. Hishon
 Annemarie Hitchcock

Kathleen J. Hodges
Richard E. Hodges Jr.
Barry R. Holcombe
Marjory E. Holder
Daniel P. Holl
Pleshette M. Holland
Gilbert W. Holley
Susanne Hollinger
Richard and Kay Holmes
Allen R. Hoon
Samuel J. Hooper III
Teresa L. Hopkin
Steven G. Hopkins
Anne Marie S. Horowitz
J. Michael Hosford
Elaine B. Howard
James and Mary Long Howard
John W. Howard
David M. Hudson
Hugh and Cathie Hudson
Joe R. Hudson
Randall and Linda Hughes
Robert and Elisabeth Hughes
Jessica J. Hunter
David and Nancy Hupp
Oliver L. Hurley
William and Barbara Hurst
Thomas and Polly Hyatt
Omotayo G. Idowu
Samantha L. Imber
Jack D. Ingold
Greg K. Ingram
Douglas M. Isenberg
Chara Jackson
Derek M. Jackson
Jennifer J. Jackson
Julian Jacobs
Temaly Jacobs
Janet R. Jakobsen
Mike A. Jamal
Cathy C. Jamison
Keith M. Jasinski
Isabella T. Jenkins
Melissa E. Jewell
Lonnie M. Johns Jr.
David J. Johnson
Joia M. Johnson
Pamela L. Johnson
Rose L. Johnson
Hiram and Babs Johnston
Charles E. Jones
Richard A. Jones
Stan Jones and Barbara T. Cleveland
Teresa F. Judon
Julian C. Juergensmeyer
Jason M. Jundt
John S. Kaminer
Trisha K. Kanan
Steven D. Kapplin
Jessica M. Kattula
Paul S. Katz
Sidney and Ruth Katz
Kenneth and Carolyn Kee
Walter Keel
Keith and Katherine Keeney
William C. Kennedy
Patricia G. Ketsche
Norma C. Key
Sharon S. Kilfeather

Omesh Kini
Margaret C. Kirby
Dale C. Kirkland
Richard and Leslie Klein
Stanford and Eve Klinger
Royce G. Knight
Ramsey and Allison Knowles
John O. Knox Jr.
Christine A. Koehler
Debra T. Kohl
Nick F. Kory
Alan G. Krigline
Nancy P. Kropf
Sandra S. Kruger
Michael Kwan
Bruce and Diane LaBudde
Timothy E. LaTour
Charlie and Nancy Lail
Patrick and Charlotte Lail
Gloria F. Lamar
David Lamb
James and Sheila Landis
A. Sidney Lane
Noah Langdale*
Margaret E. Langford
Ronald Lanio
Pamela J. Larson-Burns
Debra A. Lauzon
J. Mark Lawson
Juana L. Leary
Matthew J. Lee
Keith J. Leggett
Ruoh-Lih Lei
Andrew M. Lemon
Kimberly Lemon
Elizabeth A. Lester
James E. Lester
Joyce L. Lester
Barry and Hassia Levin
Brad and Anne Lewis
Jan E. Lewis
Joyce G. Lewis
Richard H. Lewis
Kuiru Li
Scott Lightsey
Kevin and Lee Little
Richard Litwin
Leigh A. Liu
Yuan Liu
David M. Lockett
Alfred and Vernita Lockhart
Paul A. Lombardo
Jonathan K. Long
Mike Lorton
Shari C. Lotz
Robert T. Love
William G. Loventhal III
Jim S. Lovett
William E. Lovett Jr.
Thomas C. Lundin Jr.
Thomas P. Lynch
Wilford C. Lyon Jr.
Todd A. MacDowell
Mary M. MacKinnon
Eishin Machida
Steven H. Mahan
Bram Majtlis and Nathan M. Gold
Randy Malamud
Jennifer D. Malinovsky

Teresa T. Malmer
Lewis F. Mann Jr.
Richard F. Mann
James and Beverly Marshall
Kimberlee K. Martens
David E. Martin
David and Lynn Martin
Elizabeth F. Martin
Gregory and Susan Martin
Joseph and Larrie Martin
Jorge L. Martinez
Frank L. Marzo
Nancy P. Mathews
Robert L. Mays
Thomas and Georgia McAuley
Ronald O. McBride
Corin and Amy McCarthy
Martha G. McClure
David and Kathy McCollum
Jerald and Frances McCollum
Matthew M. McCord
Susan R. McCullar
Robert J. McCulloch
Aimee M. McDonald
John K. McDonald
A. Joann McDowell
Glover and Joanne McGhee
Louise M. McGuire
Gary and Anne McKillips
Cecil G. McLendon
Maureen M. McLeod
Odiel B. McLeod
Amy P. McMorrow
Tiffany B. McNary
Shawn M. Meade
Hunter T. Meadows
John C. Medlock
Paul and Leslie Mendel
Peter D. Mertzanis
William Messier Jr.
Joel Meyers
F. Faison and Karin Middleton
H. Roland and Sandra Miller
Hugh R. Miller
Scott R. Miller and Kim S. Dammers
Tina R. Miller
Nancy Millett
Alicia M. Mills
Bert T. Mills
Stacia S. Minton
Karen J. Minyard
Laura G. Mitchell
Z. Peter Mitchell
Ahmed Moinuddin
Susan L. Monk
Albert and Lisa Moore
Benjamin and Amy Moore
Harry G. Moore II
Arthur F. Morgan
Kimberly A. Morgan
Shinji Morokuma
Gaylon D. Morris
Thomas H. Morris Jr.
Timothy and Katherine Morris
Steven A. Mossbrook
Thomas and Janet Mosser
Ryan and Frances Mulderig
Nicolas R. Mulliez
Anne Z. Murphy

Jacqueline E. Murphy
Michael and Mary Murphy
Michael E. Murphy
James and Lorain Myer
David and Judy Myers
George and Barbara Nathan
Allen W. Nelson
Gregory P. Nelson
Wolfgang K. Nelson
Michael A. Newsome
Carmen and Donald Newton
Vinh P. Nguyen and Uyen K. Huynh
William J. Nichols II
Jerri Nims Rooker
Alejandra S. Nolibos
Frank D. Noyes
Beverly A. O'Brien
John J. O'Brien
Mark and Lynne O'Brien
T. Michael O'Farrell
Connor M. O'Keefe
Christy L. O'Neill
Laura A. Oakley
Susan S. Oder
Mary Margaret Oliver
Kevin P. Olivett
R. Thomas Olmer Jr.
Colleen Orchanian
John T. Oshaughnessy
Phillip D. Ostwalt
Gregory T. Ourada
Sarah M. Oxendine
Daniel D. Page
Melanie B. Paidipalli
Melissa C. Panarese
Manish and Manju Panjwani
Anthony C. Pappadakis
William F. Paraska
Marise B. Parent
Stephanie E. Parker
James V. Patton
David and Tana Pavesic
Brian K. Payne
Daniel E. Payne
Janet D. Payne
Michael G. Payne
William B. Peard
Paul H. Peck
John H. Peet
Joseph P. Peragine
David S. Perrie
Cathy L. Peterson
Carolyn S. Phelps
Alicia A. Philipp
Richard and Kelly Phillips
Walter L. Phillips
Mary K. Pienton
Vincent D. Pindat
John and Sandra Piper
Fred R. Pitman Jr.
Arthur L. Pittman
David W. Pitts
Michele M. Poirier
William and Barbara Poole
Dick Pope
Richard G. Portee
William and Martha Porter
George Potter
Jason and Donna Poulos

Joycelyn A. Pounds
 Julia H. Powell
 Harold G. Powers Jr.
 Cora A. Presley
 Robert S. Price Jr.
 George W. Prigge
 Charlie and Doris Prince
 William and Billie Prince
 Thomas A. Pritchard
 Peter M. Pritchett
 Edith N. Pula
 Thomas Purcell Jr.
 Patrick C. Quinn
 John R. Ragland
 M. Catherine Ramos
 Stephen R. Ratterree
 Robert and Wilma Redfearn
 Jonathan D. Reeder
 Howard and Susan Reese
 William and Stephanie Reeves
 Michael G. Regas II
 Thomas and Wendy Reiman
 Timothy M. Renick
 Thomas E. Reynolds
 Joseph E. Rhile
 Miles W. Rich
 Emily-May F. Richards
 Hayward Richardson
 Spurgeon and Mary Richardson
 Marilynn J. Richtarik
 Michael and Andrea Riddle
 Ted and Cynthia Rikard
 Roberta G. Rivner
 William and Cheri Robinson
 Thomas and Alexandra Roddy
 Pruett S. Roof
 Harold G. Rooker
 William and Rebecca Roper
 Steven E. Rosenberg
 William and Catherine Ross
 Matthew C. Roudane and Susan M. Ashley
 Jeffrey and Deborah Rupp
 James L. Russ III
 Richard T. Ryczek
 Richard C. Saess
 Karishma Saini
 Nancy Z. Salloom
 Stephen R. Samples
 Ronald and Jennifer Sandberg
 Kim E. Sanders
 David G. Sandt
 Michael and Jessica Satterfield
 Julian and Anita Saul
 William and Lane Sauser
 R. Marcia Sawyer
 Robin E. Sawyer
 John R. Scarbrough
 Cathy L. Scarver
 Bill Schaab
 Rodney and Cassandra Schansman
 Linda S. Schejola
 Genevieve T. Schmidt
 Randy J. Schneider
 Gerald C. Schreck
 Lisa A. Schreter
 Paul D. Schwak
 Raymond A. Scott
 Valerie D. Searcy
 David A. Sedacca

Robert N. Seebeck Jr.
 Eric J. Segall
 Stephen S. Selig III
 William and Zenobia Sessions
 Beheruz and Madhavi Sethna
 Rose A. Sevcik
 Gerald L. Seyle
 Shital M. Shah
 Shahab A. Shamsi
 Jason B. Sheffield
 Dene and Carrie Sheheane
 Gregory and Madeline Sheldon
 Guy L. Shelton
 Edward G. Sheppard Jr.
 Victor and Elise Shernoff
 Jeung B. Shim
 Edward M. Shoemaker
 Harold V. Shumacher and Nancy E. Nolan
 Michael J. Sinclair
 Kenneth R. Single
 Diane T. Siple
 Sydney W. Sivertsen
 Betty J. Skelton
 Michael R. Slater
 Britt and Teresa Smith
 Fred B. Smith
 Gregg Q. Smith
 Gregory S. Smith
 J. Larrie Smith
 Joseph B. Smith
 Kavin K. Smith
 Paul and Sandy Smith
 Margaret Smith-Burke
 Thomas R. Snead
 Marguerite E. Snyder
 William F. Snyder
 Roy and Bonnie Sobelson
 Peter Sparrow
 Trent B. Speckhals
 Jesse J. Spikes
 Robert J. Starr
 Barbara G. Stayton
 Sandra R. Steiner
 John P. Stephens
 Rebecca N. Stephens
 Michael A. Stipick
 Hugh D. Stith
 Bradley E. Strawn
 James Y. Stribling
 Carl H. Stucke
 Mary E. Stuckey
 James W. Studdard
 J. Robert Summer Jr.
 William and Ellen Sweatt
 Mark and Suzanne Sykes
 Donna L. Sylvan
 John and Marcie Tanner
 Denise B. Tanzman
 George B. Taylor Jr.
 Robert J. Taylor IV
 Scott E. Taylor
 Susan W. Taylor
 Marie Tedesco
 Michael J. Terapane
 Richard J. Terrill
 Amit Thaker
 Stephen W. Theriot
 John C. Thomas
 Walter Thomas Jr.

Les and Leanne Thomassen
 Alison L. Thompson
 Pamala M. Thompson
 Robert A. Thompson
 Walter and A. Deon Thompson
 John H. Thornton
 Floretta Thornton-Reid
 Eric E. Thorstenberg
 Jayne M. Thraen
 Lawrence A. Thrower and Rhea Ballard-
 Thrower
 Timothy J. Thurber
 Thomas E. Tiller
 Laurie L. Tis
 Freddie Tompkins
 Volkan Topalli
 Wayne D. Toth
 Lister E. Travis
 Taryn M. Trent
 R. Lee Tucker Jr.
 Robert and Peggy Tucker
 Daniel E. Turner
 John S. Twite
 Leslie W. Uddin
 Akinyele K. Umoja
 John E. Underwood Sr.
 Thomas E. Van Houten Jr.
 Arthur Vandenberg
 Somsak Vanijcharoenkarn
 Edgar A. Vaughn Jr.
 W. Forrest Veal
 Allen and Wendy Venet
 Anthony A. Ventry III
 Jennifer B. Victor
 Catherine H. Vigtel
 J. Michael Voynich
 Rose M. Wade
 Michael P. Waldron
 David and Maria Walker
 Emanuel Walker
 Lise N. Walker
 Sally Wallace
 Harriett J. Walton
 David and Catherine Washburn
 Jill Wasserman
 Scott and Megan Watson
 Wylen S. Watts
 Michael J. Webster
 Roger and Paula Weed
 Oscar Weinmeister Jr.
 Paddy S. Welles
 Donald J. Wert
 Benjamin and Donna Westberry
 M. Todd Westfall
 John T. Whaley
 Clement and Carole White
 Douglas A. White
 JoAnna F. White
 Michael A. White Sr.
 Gerald F. Whitley
 Nancy S. Whyte
 John and Susan Wieland
 Allen and Tracy Wilbanks
 Walter Wilczynski
 Bradley L. Wilkinson and Fred T. Mote III
 Edgar B. Williams Jr.
 Mark A. Williams
 Ray S. Williams
 Suzanne S. Williams

W. Joe Williams
 George and Angela Williamson
 Robert F. Willis III
 Eric S. Wilson
 William Wise Jr.
 Deborah L. Wolf
 Leslie E. Wolf
 Katherine K. Wood
 Stephanie D. Woodard
 John W. Woodward
 Charles L. Woodyard Jr.
 Douglas and Barbara Wren
 Charles and Edith Wright
 Erich N. Wust
 L. and Blaine Wyche
 James and Melissa Wylie
 Jeff Z. Xie
 Bruce Yandle Jr.
 Jenny J. Yang
 Jie Yang
 Sue-Ming Yang
 Ping Yeung
 Barry J. Young
 Harvey G. Young
 Nancy J. Young
 Zeljko Zelic
 Norman and Harriet Zoller

 3M Foundation
 AEC Contracting
 A. Brown Olmstead & Associates
 AEGON Transamerica Foundation
 AFJ Media Communications
 The Alfred & Adele Davis Academy
 AT&T Foundation
 AXA Foundation
 Abbott Laboratories Fund
 Accenture Foundation Inc.
 Aetna Foundation Inc.
 Agilent Technologies Foundation
 Alex Rubin & Company
 Alice and Noah N. Langdale Jr. Foundation Inc.
 Allyson Hodge Foundation
 American Demolition & Nuclear
 Decommissioning Inc.
 American International Group Inc.
 April and Jerry Weiner Family Foundation Inc.
 Atlanta Adlerian Society
 Atlanta Coca-Cola Bottling Company
 Atlanta Convention & Visitors Bureau
 Atlanta Housing Authority
 Atlanta Regional Commission
 Atlanta Series of Lockton Companies LLC
 Atlanta Women's Foundation
 Atlantic Bank & Trust
 Atlantic Brokerage Inc.
 Automatic Data Processing Foundation
 Automatic Data Processing Inc.
 B.J. Gunter Co. Inc.
 BCD Travel
 Bank of New York Mellon
 Barrett Summit I LLC
 Barrett Summitt II LLC
 Barrett Summitt III LLC
 Bascomb Elementary PTA
 Bauguess Management Company Inc.
 Beckman Coulter Inc.
 Behavioral & Organizational Consulting
 Association

Benchmark Design Group Inc.
 Bentley, Bentley & Bentley
 Bergherm/Holland Sabbath School Class
 Betty's Beach Rentals
 Big Creek Parents & Teachers Association
 Bobby Dodd Institute
 Borland Econometrics LLC
 Boston Scientific Corporation
 Brookhaven Health Care LLC
 Brown Enterprises
 Brushstrokes Inc.
 CJ Solutions LLC
 CVNP, LLC
 Calvin Edwards & Company
 Camcoast Services Inc.
 Carmine J. Matarazzo Charitable Foundation
 Carvill America Inc.
 Central Carolina Community Foundation
 Champion Legal Resources
 Cherry, Bekaert & Holland LLP
 Chittick Income Tax & Bookkeeping LLC
 Christian City Inc.
 Christine A. Koehler Attorney At Law
 Cingular Wireless
 City of Perry
 Claves & Petry Ltd. Publishers
 Clayton School Employees Foundation Inc.
 Clorox Company Foundation
 Clough, Harbour & Associates LLP
 Coca-Cola Enterprises
 Cohen Pollock Merlin & Small P.C.
 Colonial Pipeline Company
 Colony Square LP
 The Columbus Foundation
 Commonwealth Shareholder Services Inc.
 Community Association Underwriters of America Inc.
 Community Foundation of Central Illinois
 Contact Communications
 Cordelia Management Services
 Cornetta Enterprises Inc.
 Corning Incorporated Foundation
 Council for Advancement of Support of Education
 Coverco Inc.
 Creating With Color
 Cruz & Associates P.C.
 DEPco Accounting Services Inc.
 Daktronics Inc.
 Dale L. Evans D.D.S.
 Dayton Foundation Depository Inc.
 Deborah L. Johnson Consulting
 Deininger Benefits Advisors Inc.
 DeKalb Apartments Inc.
 Dell Inc.
 Desmear Systems Inc. Engineers & Construction Managers
 Deutsche Bank Americas Foundation
 Dorfman Foundation Inc.
 Dow Jones & Company
 Drake Inc.
 Drs. Kurtis and Joanne Davis P.C.
 Duke Energy Foundation
 Dynamic Orthotics & Prosthetics
 eBay Foundation
 EBSCO Industries Inc.
 Emerson Charitable Trust
 Emory University
 Enchanted Closet
 ethicsLINC LLC

Evangelical Lutheran Church of the Prince of Peace
 F. Richard Blue PhD LLC
 FMC Corporation
 Faded Glory LLC
 Family Matters Counseling
 Federal Home Loan Bank of Atlanta
 Findley Oaks Elementary School
 First Horizon Foundation
 First Horizon National Corporation
 Fluor Foundation
 Follett Higher Education Group
 Freddie Mac Foundation
 The Fulton Group Inc.
 G. Randall Hammond & Company
 G.T. Ajayi, CPA P.C.
 GDS Associates Inc.
 Gadrix & Associates P.C.
 Gap Foundation Gift Match Program
 Genser International Consulting
 Genuine Parts Company
 Georgia Association of Juvenile Court Clerks
 Georgia Council On Economic Education
 Gerald E. Kramer D.D.S.
 GlaxoSmithKline
 Glen Research Corporation
 Global Impact
 Goji Marketing Group Inc.
 Gold Dome Gang
 Good For Health, LLC
 Graham McKinnon IV P.C.
 Greater Atlanta Adventist Academy
 Greenwood Publishing Group Inc.
 Gulf Power Foundation
 H. R. Performance Inc.
 HENAAC
 Hagan Enterprises LLC
 Haleh Nekooraad-Long MD P.C.
 Hall Booth Smith & Slover P.C.
 Hamilton State Bank
 Harber's Appraisal Services
 Harcourt Inc.
 Harris Family Living Trust
 The Hartford
 Haynes Bridge Middle School
 Helen and Harry Saul Foundation Inc.
 Heritage Accounting & Tax Services Inc.
 Hill's Pet Nutrition Inc.
 The Home Depot Foundation
 The Home Depot Political Action Committee
 Honeywell Hometown Solutions
 Howard Maxwell Agency Inc.
 Howie Law Office LLC
 IKON Office Solutions Foundation
 IR Charitable Foundation 130
 In Concert Productions Inc.
 Industrial Developments International Inc.
 Inspec
 InterContinental Hotels Group
 Intuit Foundation
 Ivan Allen Furniture Company
 Janwyck Ltd. Inc.
 Jeannette Griffith Congdon, Lawyer-Mediator
 Jefferson State Bank
 Jim and Marlene Greene Foundation
 Joe R. Hudson Certified Public Accountant
 Joel & Joy Campbell Family Foundation
 John M. Helton Jr. CPA
 The John Marshall Law School

Jonathan L. Shakespeare PC	Oxford Industries Foundation
Judith M Perry DBA Atlanta Relationship Center	Oxford University Press
Junior Achievement of Georgia	P & L Barrett LP
JustGive	PT Miller Homes LLC
KJQ Inc.	Paladin Computing Systems Inc.
KPMG	Paramount Market Publishing Inc.
Kaplan	Pathfinders Inc.
Kay Burke & Associates LLC	Penn Payne LLC
Keene Design Inc.	Physical Therapy Services
Kendrick Financial Services Inc.	Planet Earth Recording Co.
Kevin Campbell Insurance Agency Inc.	Prime Time Leasing LLC
Kimberly Clark Foundation	Procter and Gamble Fund
Knouse Revocable Living Trust	Professional Aviation Associates
L.A.C. Optometric Services Inc.	Prudential Foundation
LaGrange College	Publix Super Markets Charities Inc.
Labadie Anesthesia Consultants LLC	Publix Super Markets Inc.
Lance J. Hamilton P.C.	R. Carlton Powell Sheriff
Laurus Inc.	R. Reynolds & D. McMillen Trust
Law Firm of Shafritz & Dean LLC	R.J. Reynolds Foundation
Law Office of David Hungeling P.C.	RLI Insurance Company
Law Office of Teresa S. McCray P.C.	Randy Bowlden & Associates Inc.
Leadership Dekalb Inc.	Reagin Masonry Contractor Inc.
Lincoln Aggregates Management LLC	Redwood Financial Services Inc.
Lorimar Inc.	Regency Centers Corporation
Low Income Tax Payer Clinic	Retlaw Auto Brokers, Inc. D/B/A Premiere Auto Brokers
Lucas, Starkey & Company PA	Rialto Ambassadors
Luci and Stan Sunshine Family Foundation Inc.	Richard T. Ryczek Jr. LLC
M. Faye McCord Attorney at Law	Risk Management Partners LLC
MMC Matching Gifts Program	Robert Charles Lesser & Co. LLC
Macy's Foundation	Robert Lunsford Painting Contractor
Management Psychology Group P.C.	Rock-Tenn Company
Marcos Alan Kerbel Revocable Trust UAD	S.L. Nusbaum Insurance Agency
Marian C. Green DBA Rightsizing By Design	Saint Paul Travelers Foundation
Mark H. Yun Attorney At Law	Salt River Project
Marte Shaw ETC	Schering-Plough Foundation
Matthew T. McNally LLC	Scholarship Foundation Lockheed Martin MG Program
McCamish Systems LLC	Scientific-Atlanta Foundation Inc.
McKee-Nix & Associates Inc.	Scofield Timber Company Inc.
McKesson Foundation Inc.	Seagill Foundation
Mclean-Behm Steel Erectors Inc.	Selig Foundation
Medtronic Foundation	Selk Production Audio Inc.
Melear Associates	Shallowford Falls Elementary School
Memorysmith Properties Intown Inc.	Shepherd Foundation Inc.
Merck Partnership for Giving	Sign Placement Services Inc.
Merrill Lynch & Co. Foundation Inc.	Skidaway Community Institute Inc.
Micro Center	Solvay Information Services NAFTA LLC
Montgomery School PTA	Southeast Atlanta Christian School
Moody's Bookkeeping & Tax Services Inc.	Speckhals & Cora P.C.
Ms. Ahlert CPA LLC	Sprint Foundation
Mu Rho Sigma Atlanta Alumnae	Staubach Company
Muse Railroad Materials Company	Staubach Company Southeast Inc.
Nan for Senate	Stokes Construction Company
Nancy P. Barker Trust	Strategic Wealth Coach LLC
National City - National City Bank	Sun Microsystems Inc.
Neil Oliver Insurance Agency	Swerdlin & Company
New York Life Foundation	TPTS LLC
Nexus Language Builders Inc.	Taylor Moore Inc.
Nordson Corporation	Templeton Leadership Coaching LLC
North Lake Rotary Club	Thompson Horn Inc.
North Valley Services Inc.	Thomson Tax & Accounting
Northern Trust Company Charitable Trust	Thomson Wadsworth
Oconee Metal Recovery Inc.	Thursday Morning Music Club
Old New York Book Shop	Tiffany and Company
Olympus America Inc.	Time Warner Foundation
Omgeo LLC	Time Warner Inc.
One Georgia Bank	Timothy R. Ardell Trust
Opinion Leader Research Inc.	Tipton Construction Company
Optima Physical Therapy Services	

Todd M. Matthews CPA P.C.
Tony and Sue Alessandra Family Foundation
Touchdown Club of Atlanta
Tyco
USA Cycling Inc.
University of Chicago
Vazquez & Servi P.C.
Vectren Foundation Inc.
Verizon Foundation
W. J. Cooper Elementary School
WKN Family Limited Partnership
Wachovia Bank, NA: Wachovia Foundation Inc.
Wanamaker & Company Inc.
Wayne Camp
WellPoint Foundation
Wells Fargo Foundation

Weston Realty Services LLC
Westrope
William A. & Shirley T. Vessels Trust
William E. Porter P.C.
Wyeth
Xerox Corporation
Yusuf M. Saleeby MD P.C.
Zurich US Foundation



ENDOWMENTS

We are grateful to those who have made gifts that continue to support Georgia State's efforts for the life of the university. The following is a list of endowments held by the Georgia State University Foundation.

20th Anniversary Law Scholarship	C.V. Starr Chair of International Insurance Endowment
Abbott Family Scholarship Endowment	Carl R. Zwerner Chair of Family Owned Businesses Endowment
Accenture Scholarship in Computer Information Systems	The Carol Rowe Jones and Waymon Jones Scholarship Endowment
African Student Association Endowed Scholarship	Carole Keels Endowed Scholarship
Ahmed Abdelal Fellowship—Molecular Genetics/Biotechnology	Carolyn L. Robison Library Award Endowment
Alfred Bernhardt Distinguished Research Professorship	Catherine C. Henson Endowed Professorship
Alfredo Barili Scholarship Endowment	Catherine E. Miles Fellowship
Allen and Eleanor Hollingsworth Scholarship	Catherine Henson Scholarship
Alonzo A. Crim Teacher Leader Fellows	CBIM Roundtable Professor of Marketing Quasi Endowment
Alumni Lifetime Membership Fund	Cecil B. Day Scholarship Endowment
Alumni Trust Scholarship	Cennette Fisher Jackson Scholarship
Amanda G. Hyatt Fellowship	Center for Biotechnology & Drug Design
Ambling Scholarship	Charles A. Williams Scholarship
Ambrose H. Pendergrast Fellowship	Charles and Catherine B. Rice Scholarship
American Association of Managing General Agents Chair in RMI	Charles and Rosemary Hall Music Industry Scholarship
Andrew C. & Eula C. Carlos Family Chair—Contemporary Greek	Charles T. Wurm Scholarship
Andrew M. West Memorial Art Scholarship	Charles Thomas Wurm Distinguished Professorship in Instrumental Music
Andrew Young Endowment	Chemistry Department Endowment
Anne Deeley Easterly Endowment	Chris Perrin Memorial Scholarship
Anne L. Harper Annual Lecture in Women's Studies	Chris Yannopoulos Memorial Scholarship
Anne M. Eaton Endowed Scholarship	Claire Hammond Diercks Scholarship
Anonymous Endowed Athletic Scholarship	Clara Lazar Feldman Presidential Scholarship
Anonymous Endowed Fellowship in English	Claudia Lacson Memorial Endowment
Applied Linguistics/ESL—CPUA Scholarship	Clyde Kitchens/Thoben Elrod/Delta Sigma Pi Doctoral Fellow
Atlanta Air Cargo Association/Marv Gordon Memorial Scholarship	Coca-Cola Scholarship Fund
Bailey M. Wade Memorial Scholarship	College of Education Scholarship
Bank of America Distinguished Lecture Series	College of Law Board of Visitors Scholarship
Bank of America MBA Scholars	College of Law Scholarship
Barbara and Elmer Sunday Professorship in Marketing	College of Law Student Trial Teams Endowment
Barbara P. Payne Lectureship	College of Law Symposium Endowment
Baseball Alumni, Friends and Family Endowed Scholarship	College of Law Tax Clinic Endowment
Ben and Stella Johnson Law Scholarship	Concierge Society of Atlanta Kevin-Roach Memorial Scholarship
Ben F. Johnson, Jr. Chair in Law	Copen Faculty Grant
Ben F. Johnson, Jr. Public Service Award Endowment	Dan Sweat Distinguished Scholar Chair
Benjamin Mays Chair of Urban Educational Leadership	Dan Sweat Scholarship
Bennett A. Brown Scholarship	Daniel J. Sansone Memorial Scholarship
Bergeron Women in Technology Leadership Scholarship Fund	Darryl and Michelle Harris Endowed Scholarship—Men's Golf
Bernard B. and Eugenia A. Ramsey Chair of Private Enterprise Endowment	David C. Blumenfeld Faculty Support Endowment
Bill Lowery Scholarship	David E. Ogren Memorial Endowed Scholarship
Biology Department Endowment	David Franco Piha Memorial Scholarship
Bobbie Bailey / NARAS Endowment	David J. Maleski Scholarship
Bobbie Bailey Professorship Endowment	David W. Boykin Graduate Fellowship in Medicinal Chemistry
The Bobby Joe Chancey Sr. Memorial Scholarship	Dean E. Dryer Endowment
Bobby Lee Cook Endowed Professorship In Law	Dexter and Karen Warrior Scholarship in Real Estate
Bruce A. Palmer Professorship	Diane L. Fowlkes Research Award
Burge Family Endowed Scholarship	Distinguished Chair in Public Safety Partnerships
Byrdine F. Lewis Endowment	Distinguished Executive Fellow in the Usery Center
Cecil B. Day School of Hospitality Administration Endowment	Diversity in the Legal Profession Scholarship
	Doctoral Fellowship in Trauma Intervention

Donald Ahearn Fellowship-Applied/
Environmental Microbiology

Donald G. Ahearn Endowed Fund for AEM
Research

Donald S. Gingrich Scholarship in Music
Education

Donna Novak Coles Georgia Women's
Movement Archives

Dr. Colquitt L. Buck Chandler, Jr. Memorial
Scholarship

Duane & Drada Hoover Endowed Choral
Scholarship

Duane M. Rumbaugh Fellowship

E. A. Isakson Scholarship

E. Harold Stokes Professorship (Insurance
Premiums)

E. Jo Baker-Frances Wallace Music
Scholarship

E. Louise Grant Nursing Faculty Award

E.D. (Jack) Dunn Fellowship and Research
Fund

Economic Forecasting Endowment

Edmund and Cecil Laird Scholarship

Edwin and Ina Gerschefski Violoncello
Scholarship

Eleanor M. Pratt Endowment for English
Majors

Ellen L. Evans History Faculty Enrichment
Endowment

Emeriti Endowment Fund

Eminent Scholar Chair in Digital Commerce

Eminent Scholar in Drug Discovery

Eminent Scholars Chair in Molecular Genetics
Endowment for Biology Faculty Support

Endowment for Freshman Learning
Communities

Endowment for GSURF Support for the
Department of Biology

Eric Smith Memorial Endowment

Ernest Elwood Wright, Jr. Scholarship

Ernest G. Welch School of Art & Design
Endowment

Ernst & Young/J. W. Holloway Professorship

Ethel I. Woodruff Fellowship in Southern
History

Ethel W. Draper Research Fellowship

Evelyn S. Bowyer Memorial Scholarship
Endowment

Ezzard Presidential Scholarship

F. A. O'Daniel Law Scholarship Endowment

Faculty Support for the Department of
Psychology Endowment

Faye Lancaster Neuenkirch Memorial
Nursing Scholarship

Florence Kopleff Recital Hall Endowment

Florence Kopleff Vocal Scholarship

Founders' Legacy Professorship

Fred Massey Endowed Scholarship

Fredrick V. Sherwood and Daniel T. Sims
Memorial Scholarship

Friedrich William Ralf Munster Fellowships
in Philosophy

GA International Law Enforcement Exchange
Program

George A. Chance, III Scholarship

George E. Manners Scholarship

George E. Smith Eminent Scholar

George M. Sparks Scholarship

George Malanos Economics Scholarship

George R. and Frances T. Greiff Scholarship/
Fellowship

Georgia Association of Realtors Scholarship

Georgia Civil Justice Foundation Trial
Advocacy Scholarship

Gerontology Alumni Endowed Scholarship

Glenn A. Vergason Scholarship

Goizueta Foundation Scholars-Endowment

Gordon Seagraves Cummings Memorial
Scholarship Endowment in Physical Therapy

Governor Joe Frank Harris Endowed
Scholarship

H. Reid Hunter Loan/Scholarship

H. Talmage Dobbs, Jr. Chair Of Finance

H. Talmage Dobbs, Jr. Professorship in
Finance

Harold L. Ball Endowed Scholarship Fund

Harold V. & Anna Marie Little Scholarship in
Gerontology Endowment

Haskell and Mabel Boyter Choral Scholarship

Health Administration Endowment

Helen Riley Smith Voice Scholarship

Hellen I. Plummer Lectureship

Henry F. Stabler Award

Henry T. Malone Memorial Scholarship in
History

Herbert H. Mabry Scholarship Fund

Herman J. Russell Distinguished
Professorship in Entrepreneurship

Hermann Paris Scholarship

Homer R. Hannah Memorial Scholarship

Howard S. and Marie H. Starks Scholarship

Hunter Realty Associates, Inc. Scholarship
Endowment

J. D. & Lenora Caswell Endowment for
Athletics

J. Everette DeVaughn Fellowship

J. Fred & Linda Bailey Criminal Justice Fund

J. M. Tull Professorship in Computer
Information Systems

J. Mack Robinson Eminent Scholar Chair in
Digital Commerce

J. Mack Robinson Endowment

J. Mack Robinson Endowment for College
Professorships

J. Mack Robinson Endowment for
Scholarships

J. Michael Gearon, Jr. Endowment

J. Rhodes Haverty Lecture Series

Jack Blicksilver Scholarship in Economics

Jack Dunn Banking Scholarship

Jackie Boles Fellowship

James E. & Patricia W. Copeland/Deloitte
Accountancy Chair

James A. and Gail E. Stark Endowed Athletic
Scholarship

James A. and Gloria S. Cochran Executive in
Residence

James A. Harkins III Professorship in
Electronic Commerce

James A. Lewis Award

James L. Maddex, Jr. Scholarship

James M. Adams Basketball Endowment

James M. and Kathryn D. Adams Endowed
Athletics Scholarship

James W. Kemper Professorship in Risk
Management & Insurance

James W. Woodruff, Jr. Fellowship

Janice M. Hadrill Memorial Scholarship for
Dietetics

Jean Childs Young Fellowship Endowment

Jenny Thurston Fellowship and Award in
Historic Preservation

Jerry Robbins Endowed Scholarship

Jim Mills Memorial Scholarship

Jimmy H. Adams Memorial Scholarship

Joe Taylor Chair in Health Administration

John B. & Elena Diaz-Verson Amos Endowed
Chair in English

John B. Zellars Professorship in Computer
Information Systems

John Cowart Scholarship

John Demos Memorial Scholarship	MAA Auxiliary-Barbara Haltiwanger Memorial Scholarship
John E. and Helen M. Aderhold Endowed Athletic Scholarship	Marcia Baker Carroll and Almand "Bo" Carroll Scholarship
John Schneider Memorial Scholarship	Margaret A. (Peg) Jones Scholarship
John W. Cook Scholarship	Margaret A. Staton Endowment
John W. Hall Scholarship	Margaret Ewing Endowment in Family Oral Histories
John W. Morgan Scholarship	Margaret L. Andersen Scholarship Endowment in Sociology
John William Armstrong, Jr. Endowment in Communications	Margaret Lupo Scholarship
Johnny Mercer Center	Marion B. Davis Scholarship
Joseph Jacobs Labor Endowment	Mark and Evelyn Trammell Professorship in Tax Law Endowment
Joseph Perrin Award	Marketing Department Doctoral Dissertation
Josephine J. Isakson Scholarship	Marketing Roundtable Minority Endowed Scholarship
Kaiser Permanente Endowed Nursing Scholarship	Marketing Roundtable Professorship—Quasi Endowment
Katherine Bruner Moore Religious Studies Endowment	Martha Wren Gaines Endowed Research Fellowship
Katherine S. Bernhardt Research Professorship in Marketing	Martin Sherry/Atlanta Broadcast Advertising Club Scholarship
Kathleen D. Crouch Memorial Scholarship	Mary H. Huggins Memorial Scholarship
Kay Retta Shirley Faculty Encouragement and Endowed Guest Artist Series	Mary Kathleen Berry Scholarship Endowment
Kenneth and Mary Matheny Endowed Scholarship	Mary Peavy Girls Club Scholarship
Kenneth Bernhardt Distinguished Dept. Chair in Marketing	Max M. Cuba Scholarship
Kenneth Black, Jr. Chair of Insurance	Maymi Walker Chandler Memorial Scholarship
Kenneth England Endowed Scholarship	McRae F. Williams Endowed Athletic Scholarship
Kenneth England Presidential Scholarship Endowment	Men's Soccer Alumni, Friends and Family Endowed Scholarship
Kenneth M. England Professorship	Men's Tennis Alumni, Friends and Family Endowed Scholarship
KPMG/E. Harold Stokes Professorship in Accounting	Merl E. Reed Fellowship in Southern Labor History
L.E. Berry Graduate Fellowship	Merle K. Lott Scholarship
Labor Archives Endowment	Michael J. Jedel Endowed Scholarship
Lamar Gammage Law Scholarship	Michelle Ferguson-Priestly Award
Lanette L. Suttles Scholarship	Mike Hurst Endowed Baseball Scholarship
Langdale-Cabaniss-Pizer Endowed Fund	Mildred & Ted Byers Endowment
Language Research Center Endowment	Mildred W. Seydel Scholarship
Lawrence J. Rifkind Scholarship in Speech	Milton M. Ratner Scholarship
Lehman C. Wheeler Memorial Scholarship	Montgomery Music Scholarship
Leonard Jenkins Underrepresented Student Scholarship	Moses Lee Reid Entrepreneurial Award
Leszek Wegrzyn Scholarship	Mrs. Tommie Jackson Scholarship
Leyton Hunter Fellowship	Mu Rho Sigma Sorority Scholarship
Library—African American Studies	Nancy Goyer Scholarship
Library—Dean Dreyer	Narviar Cathcart Barker Scholarship
Library—Expositions Management	Nell Trotter Hamilton Endowed Scholarship Fund
Library—John Wright	Neurobiology Fellowship Endowment
Library—Kenneth Black	New York Life Professorship
Library—Lambda Iota Tau	Nita Robinson Scholars Endowment Fund
Library—Michael Logue	Noah Langdale, Jr. Chair
Library—Pullen Political Science	Noah Langdale, Jr. Presidential Scholars Endowment
Library—Ralph E. Russell	Orbun Troy Moore, III Memorial Library Endowment
Library—W. R. Hammond Book	Our Mothers' Fund
Library—Women's Studies	Panther Club Endowment
Library Endowment—Carl R. Kropf	Patricia T. Morgan Endowed Scholarship
Library Endowment—Ezell History	Patrick H. Thomas Scholarship
Library Endowment—General Business	Paul Bowles Annual Prize for Fiction—Five Points
Library Endowment—Social Work	Paul Bowles Graduate Fellowship in Creative Writing
Library General Endowment	Paul Groves Blount Scholarship
Library N. E. H. Endowment	Peter Harrower Scholarship In Voice
Linda Hallenborg Kurtz Oral History Endowment Fund	Phi Chi Theta Atlanta Alumni
The Lloyd and Linda S. Byars Scholarship Endowed Fund	Phil and Jeanne Oneacre Endowed Men's Basketball Scholarship
Lois Statham Simons Memorial Fund	Phil Peters Scholarship
Lori Muse Study Abroad Scholarship	Pickett Riggs Scholarship
Lucile Allen Memorial Scholarship	
Lucy H. Draper U.S. E.R.A. Research Collection Endowment	
M. Guyton Christopher Memorial Scholarship	

Presidential Scholarship Endowment
 Professorship in International Banking and Finance
 Psychology Department Graduate Award Endowment
 Public Administration and Urban Studies CUA Scholarship
 R. Brad Foster Scholarship Endowment for Golf
 Ralph C. Moor Endowment for Economics and the Family
 Rankin and Sandy Cooter Endowed Athletics Scholarship
 RCB Program Development Endowment
 Real Estate Alumni Professor of Real Estate
 Real Estate Center Endowment
 Research, Measurement & Statistics Endowed Fellowship
 Richard and Susan Lenny Distinguished Chair in Marketing
 Richard E. Bowers Professorship in Real Estate
 Rick Anderson Scholarship for City of Atlanta Employees
 Robert F. Clayton, Jr. Scholarship
 Robert L. Arrington Graduate Fellowship in Philosophy
 Robert L. Blakely Endowed Scholarship in Anthropology
 Robert R. King Scholarship Endowment
 Robert W. Batten Chair Endowment
 Robert W. Sellen Scholarship in History
 Ronald H. Brown, Jr. Institute
 Ronald P. Colarusso Dean's Scholarship
 Rosenberg Family Endowment for the Johan Droogmans Law Scholarship
 Roy B. Sewell Beta Gamma Sigma
 Roy B. Sewell Phi Kappa Phi
 Roy Reeves Scholarship
 Salisbury Endowment
 Sally Monsour Graduate Fellowship in Music Education
 Sam and Joyce Turner Scholarship
 Sam Wallace Memorial Scholarship
 Scholarship Endowment in Creative Writing
 Scott-Norcostco Theater Scholarship
 Sgt. Fst. Cl. Robert William Neuenkirch Memorial Scholarship
 Sherman R. Day Scholarship
 Sidney E. and Mary S. Harris Study Abroad Scholarship
 Sidney Feldman Scholarship Endowment Fund
 Social Work-CPUA Scholarship
 Softball Alumni, Friends and Family Endowed Scholarship
 Southeastern Bankruptcy Law Institute Professorship
 Speir-Brook Scholarship
 Staff Recognition Endowment
 Stephen E. Draper Law Library
 Steve Rosenburg Memorial Endowed Baseball Scholarship
 Steve Winick Memorial Scholarship
 Stoney Burgess Endowed Athletic Scholarship
 SunTrust Professorship in Capital Markets
 Susan Babush Memorial Scholarship
 Tasca A. Moore Scholarship
 Taylor E. Little, Jr. Endowed Scholarship
 Taylor E. Little, Jr. Professorship in Marketing
 Terry F. Barker Memorial Scholarship
 Thera H. Richter Memorial Scholarship
 Theresa Nash Bernstein Scholarship in International Travel

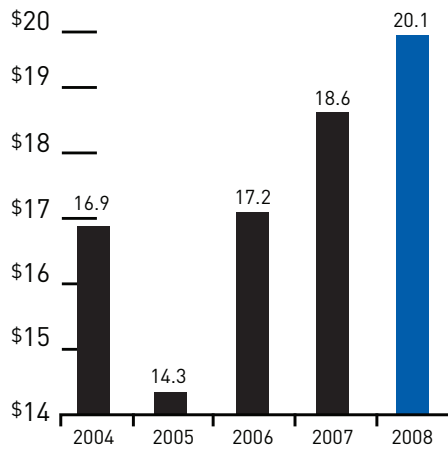
Thoben Elrod Scholarship
 Thomas M. Brumby Scholarship
 Thomas P. Bowles, Jr. Chair of Actuarial Science
 Tracy W. O'Neal Endowment
 TRISPRO Scholarship
 Troy Moore Undergraduate Ethics Essay Contest Award Endowment
 United Airlines / Eddie Carlson Scholarship
 UPS Anonymous Restricted Endowment
 Vachel Pennebaker Eminent Scholar Chair in Direct Marketing
 Vera Jernigan Green Memorial Art Award
 Vicki York Fair Scholarship
 Views from the Top Professorship in Real Estate Endowment
 Virginia Spencer Carr Graduate Fellowship
 Volleyball Alumni, Friends and Family Endowed Scholarship
 W. Lee Burge Chair in Law and Ethics
 W. Lee Burge Scholarship
 W. T. Beebe Personnel Relations
 W.J. Usery, Jr. Center for the Workplace
 Wachovia Small Business Development Scholarship-Endowment
 Wayne Daniel Endowment
 WGCL-TV/Leigh Green Memorial Scholarship
 William C. "Bill" Sparrow Endowed Scholarship
 William D. and Susan T. Reeves Endowed Athletic Scholarship
 William G. Densmore Vocal Scholarship
 William G. Nolan Memorial Scholarship
 William M. Suttles Chair of Religious Studies
 William M. Suttles Endowed Scholarship
 William M. Suttles Fellowship for Graduate Students
 William P. Key Endowed Scholarship
 William S. Patrick Scholarship
 William T. Rutherford Scholarship
 Willie Mae Cathcart Scholarship
 Winnie Chandler Art and Design Fellowship
 Wolverton Doctoral Award
 Women's Basketball Alumni and Friends Endowed Scholarship
 Women's Soccer Alumni Friends and Family Endowed Scholarship
 Women's Tennis Alumni Friends and Family Endowed Scholarship
 World History Center Endowment
 Zera-Allen Scholarship Fund

FISCAL YEAR 2008

FINANCIAL INFORMATION

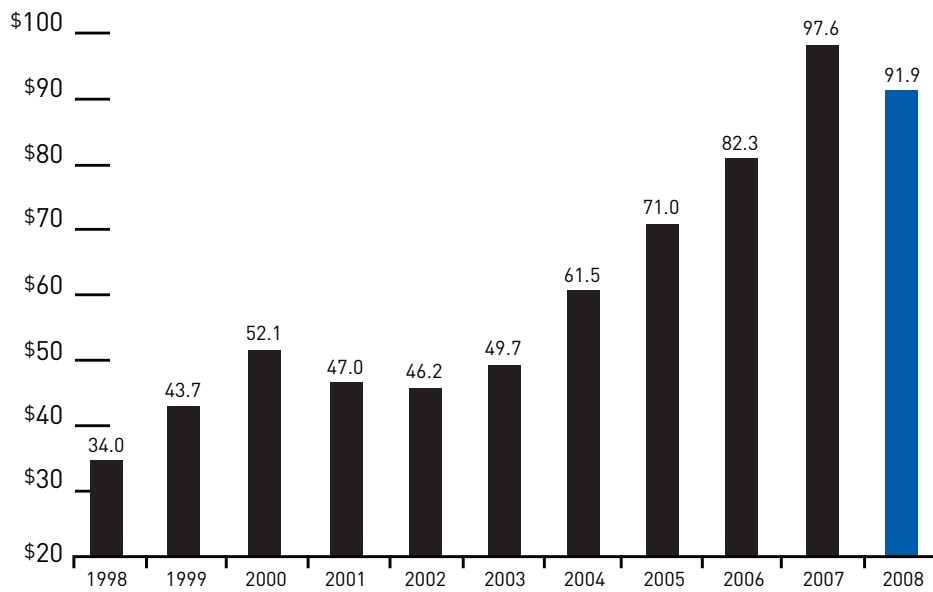
Funds Raised

Dollars in Millions



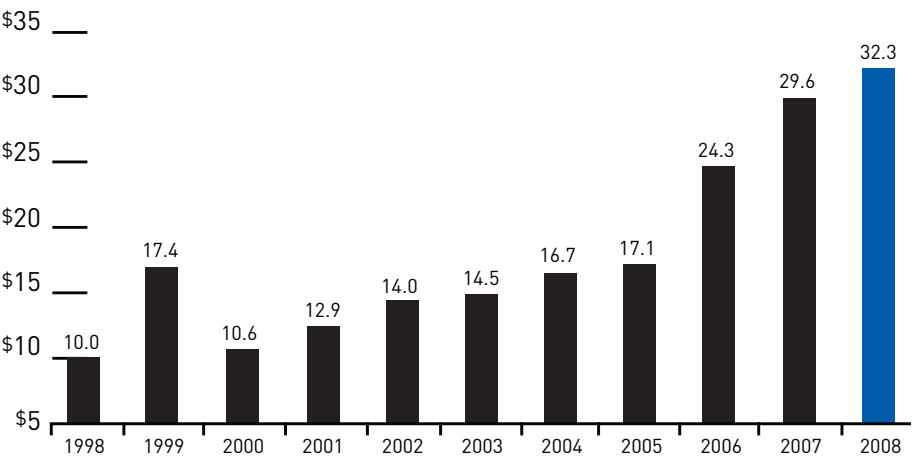
Foundation Endowment Assets

Dollars in Millions



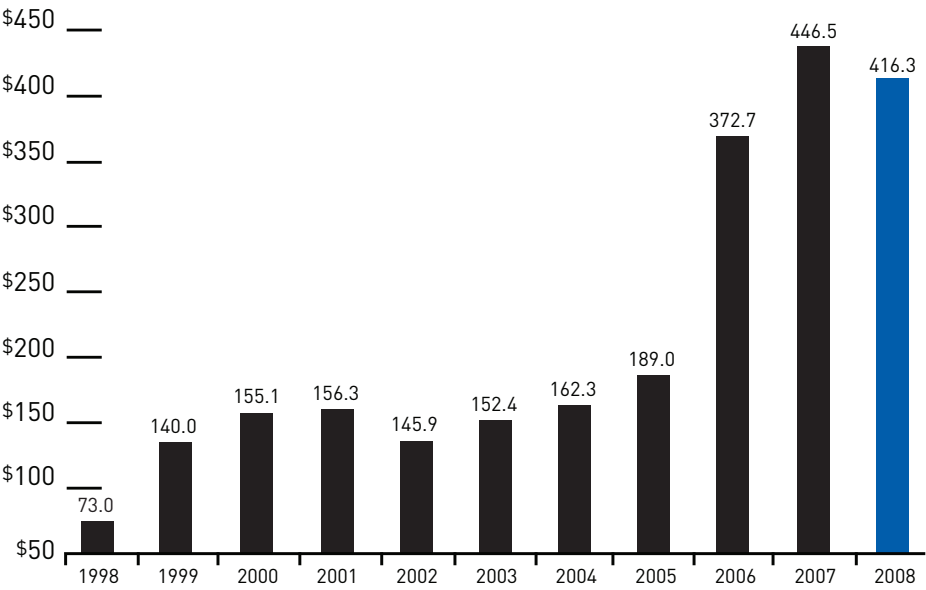
Annual Foundation Support for Georgia State University

Dollars in Millions



Foundation Total Assets

Dollars in Millions



GEORGIA STATE UNIVERSITY HIGHLIGHTS

JULY 1, 2007–JUNE 30, 2008

AUGUST 2007

University Commons, Georgia State's newest campus dorm, opens its doors to 2,000 students for fall classes. As one of the largest residence halls in the country, University Commons is a 4.2-acre complex of four apartment buildings ranging from eight to 15 stories.



Randy Kamphaus (**above**) is hired as the sixth dean of the College of Education.

SEPTEMBER 2007

Donors and their scholarship recipients are recognized at the first Scholarship Recipient and Donor Recognition Event hosted by the Georgia State University Foundation.



The College of Law kicks off its year-long 25th anniversary celebration, which includes an international conference on the future of legal education, a keynote lecture featuring former Supreme Court Justice Sandra Day O'Connor (**bottom left**) and a commitment by College of Law faculty, staff and students to perform 25,000 pro bono and community service hours.

OCTOBER 2007

Georgia State University Crew competes in Boston in the Head of the Charles Regatta, the largest and most prestigious regatta in the U.S. The rowing team began in 1989. Members currently practice five days a week at 4:50 a.m. on the Chattahoochee River in Roswell.

The four members of the College of Law's Mock Trial Team (**below**) win the national title at the 17th Annual Cathy Bennett National Student Trial.



NOVEMBER 2007

After a six-year, \$23 million renovation, Georgia State celebrates the grand re-opening of its transformed library (**above**). With 296 new computers, thousands of additional books and online resources and 1,900 more seats, the two-building library at the heart of campus is better equipped to serve its 1.5 million visitors each year.



WRAS-Atlanta 88.5, Georgia State's student run radio station voted by Creative Loafing readers as Atlanta's "Best Non-Commercial Station", is featured on the XMUNation program, the XMU Student Exchange Program on XM radio, XM43 and DIRECTV channel 831.

DECEMBER 2007

Georgia State celebrates the Class of 2007 in its first fall commencement **(above)** ceremony in the Georgia Dome.



One of the first Afghani Fulbright Scholars, Sardar Ahmad **(above)**, receives a Master of Public Health degree from the Institute of Public Health in the College of Health and Human Sciences. Ahmad is a physician from Afghanistan and former communications officer with the World Health Organization.

JANUARY 2008

The Honors Program, housed in the College of Arts and Sciences since 1975, becomes a university-wide program, open to students across five colleges. Currently 550 students are enrolled in the program.

The Department of Mathematics and Statistics begins its new Ph.D. program. Students can concentrate in Bioinformatics, Biostatistics or Mathematics.

FEBRUARY 2008

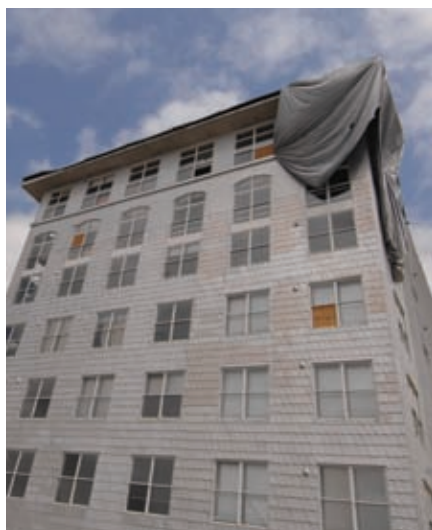
USA TODAY's 2008 All-USA College Academic Team program honors Henry Swofford, a Georgia State University Presidential Scholar and biology major. The program recognizes students who have excelled in the classroom and used their intellectual abilities to benefit their schools and communities.

Dr. Noah Noel Langdale Jr., president of Georgia State University from 1957 to 1988, dies on February 23. During Langdale's 31 years as president, Georgia State College grew to become Georgia State University, and its student population expanded from 5,000 students with only one degree program to more than 20,000 students and over 200 programs.

Georgia State breaks ground at the corner of Edgewood and Piedmont Avenues for the new Freshman Hall and Special Interest Student Housing. Both projects should be completed by fall 2009 and will bring the university closer to its goal of having 20 percent of students living on campus by 2015.



The J. Mack Robinson College of Business' new Executive Center opens at 200 Tower Place in Buckhead **(above)**. Robinson's EMBA, Center for Global Business Leadership and Executive Education programs are all housed here.



MARCH 2008

The first tornado to ever hit downtown Atlanta since record keeping began in the late 1800's passes through Georgia State University. University Lofts (**above**) suffered a large hole on the 14th floor from 130-mile per hour winds. Several other buildings were damaged as well. Fortunately, no one was injured.

Elie Wiesel, Nobel Laureate, author and Holocaust survivor, speaks about "Building a Moral Society: the Urgency of Hope" at Georgia State's third bi-annual Cultural Competency Conference at the Sports Arena.

APRIL 2008

The J. Mack Robinson College of Business partners with Moscow State University to launch the first U.S.-based Executive MBA program to be offered on-site in Russia. The program, Executive Leaders, fulfills the demand for Russia's growing business community. Students can earn a Master of Science from Moscow State and an EMBA from Georgia State.

President Patton announces that the university will kick off its first football game in 2010. The Panthers will play at the NCAA Football Championship Subdivision Level (formally known as NCAA Division I-AA), and host their home games in the Georgia Dome.



The Georgia State University Foundation hosts the Endowed Chairs and Professorships Luncheon to recognize faculty recipients and show appreciation to their benefactors.

MAY 2008

Following a national search, Georgia State University Provost Ron Henry names Nancy H. Seamans as Georgia State's new dean of libraries, effective August 4.

The J. Mack Robinson College of Business receives the "Area of Focus" grant, the equivalent of a \$35 million endowment, to establish the Center for Economic Analysis of Risk.

The largest class in more than a decade, 115 students, graduated from the School of Nursing in the College of Health and Human Sciences.

JUNE 2008

Bill Curry, former head coach at Georgia Tech, Alabama and Kentucky, is named as head coach of Georgia State's first football team.

Dr. V. Kumar joins the J. Mack Robinson College of Business in June 2008 as the Richard and Susan Lenny Distinguished Chair in Marketing. Recognized world wide as one of the top five leaders in marketing, Kumar is hired to establish the Center for Excellence in Brand and Customer Management.





GEORGIA STATE UNIVERSITY FOUNDATION
P.O. Box 3963 | Atlanta, Georgia 30302-3963

NONPROFIT ORG.

U.S. POSTAGE

PAID

ATLANTA, GA

PERMIT NO. 152

Please detach on the perforated lines, and mail back to us courtesy of Georgia State University Foundation.

WE VALUE YOUR OPINION.

The foundation’s annual report is intended to recognize your support and inform you about the impact that private giving makes on Georgia State University.

PLEASE SHARE YOUR COMMENTS WITH US!

- How important is it for you to receive the Georgia State University Foundation annual report?
☐ Unimportant ☐ Important ☐ Neither important nor unimportant
- How important is it for you to see the honor roll list printed in the annual report?
☐ Unimportant ☐ Important ☐ Neither important nor unimportant
- Would you prefer an electronic annual report instead of a printed report?
☐ Yes ☐ No
- How would you rate this year’s annual report?
☐ Excellent ☐ Good ☐ Fair ☐ Poor
- Does receiving this report make you more likely to continue to give to Georgia State?
☐ Yes ☐ No
- What would make this annual report more meaningful to you?

7. Please provide updated contact information.

Name: _____

Address: _____

Phone: _____

Employer: _____

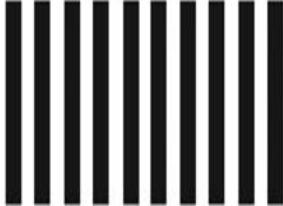
Address: _____

Phone: _____

ATTN: President's Office
Kimber Burgess
i3431



NO POSTAGE
NECESSARY
IF MAILED
IN THE
UNITED STATES



BUSINESS REPLY MAIL

FIRST-CLASS MAIL PERMIT NO. 5528 ATLANTA, GA

POSTAGE WILL BE PAID BY ADDRESSEE

GEORGIA STATE UNIVERSITY
UNIVERSITY PLAZA
ATLANTA, GA 30303-9983

